

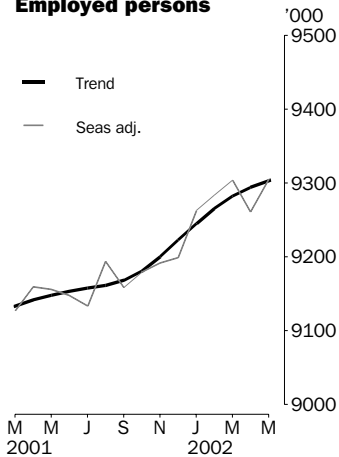


LABOUR FORCE

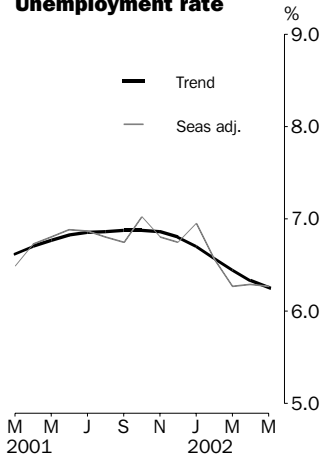
AUSTRALIA
PRELIMINARY

EMBARGO: 11:30AM (CANBERRA TIME) THURS 6 JUNE 2002

Employed persons



Unemployment rate



MAY KEY FIGURES

TREND

	Apr 2002	May 2002	monthly change
Employed persons ('000)	9 294.3	9 302.7	0.1 %
Unemployed persons ('000)	628.2	619.6	-1.4 %
Unemployment rate (%)	6.3	6.2	-0.1 pts
Participation rate (%)	63.7	63.6	-0.1 pts

SEASONALLY ADJUSTED

	Apr 2002	May 2002	monthly change
Employed persons ('000)	9 260.8	9 305.2	44.4
Unemployed persons ('000)	621.6	622.5	0.9
Unemployment rate (%)	6.3	6.3	0.0 pts
Participation rate (%)	63.4	63.6	0.2 pts

MAY KEY POINTS

TREND ESTIMATES

EMPLOYMENT

- increased to 9,302,700.

UNEMPLOYMENT

- decreased to 619,600.

UNEMPLOYMENT RATE

- decreased to 6.2%.

PARTICIPATION RATE

- decreased to 63.6%.

SEASONALLY ADJUSTED ESTIMATES

EMPLOYMENT

- increased by 44,400 to 9,305,200. Full-time employment increased by 75,300 to 6,720,700 while part-time employment decreased by 30,900 to 2,584,400.

UNEMPLOYMENT

- increased slightly to 622,500. The number of persons looking for full-time work decreased by 8,900 to 464,500 and the number of persons looking for part-time work increased by 9,800 to 158,000.

UNEMPLOYMENT RATE

- remained steady at 6.3%. The male rate decreased to 6.6% and the female rate increased to 5.9%.
- NSW 6.1% (6.0% last month), Vic 5.7% (5.7%), Qld 7.5% (7.6%), SA 6.6% (6.6%), WA 6.5% (6.3%), Tas 8.5% (8.0%).

PARTICIPATION RATE

- increased by 0.2 percentage points to 63.6%.

- For further information about these and related statistics, contact Narrisa Gilbert on 02 6252 5283, or the National Information and Referral Service on 1300 135 070.

NOTES

FORTHCOMING ISSUES

<i>ISSUE</i>	<i>RELEASE DATE</i>
June 2002	11 July 2002
July 2002	08 August 2002
August 2002	12 September 2002
September 2002	10 October 2002
October 2002	07 November 2002
November 2002	12 December 2002



ROUNDING

Estimates of monthly change shown on page 1 have been calculated using unrounded estimates, and may be different from, but are more accurate than, movements obtained from the rounded estimates. The graphs on page 1 also depict movements calculated from unrounded estimates.



SAMPLING ERRORS

The estimates in this publication are based on a sample survey. Because the entire population is not enumerated, the published estimates and the movements derived from them are subject to sampling variability. Standard errors give a measure of this variability and appear on pages 31 and 32.

The 95% confidence intervals below provide another way of looking at the variability inherent in estimates from sample surveys. The interval bounded by the two limits is the 95% confidence interval. A 95% confidence interval indicates that we are 95% confident that the upper and lower limits enclose the true value of the estimate.

<i>SEASONALLY ADJUSTED DATA SERIES</i>	<i>MOVEMENTS APRIL 2002 TO MAY 2002</i>	
	<i>Monthly change</i>	<i>95% Confidence interval</i>
Total employment	44 400	7 800 to 81 000
Total unemployment	900	-13 100 to 14 900
Unemployment rate	0.0 pts	-0.2 pts to 0.2 pts
Participation rate	0.2 pts	0.0 pts to 0.4 pts

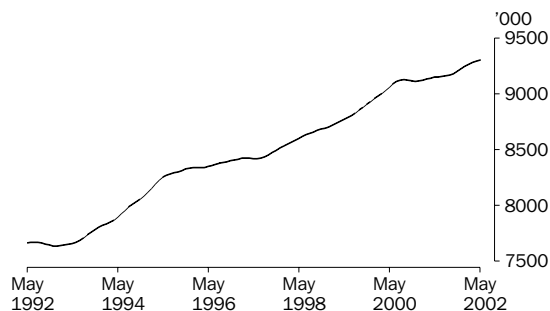


R.W. Edwards
Acting Australian Statistician

PRINCIPAL LABOUR FORCE SERIES: Trend estimates

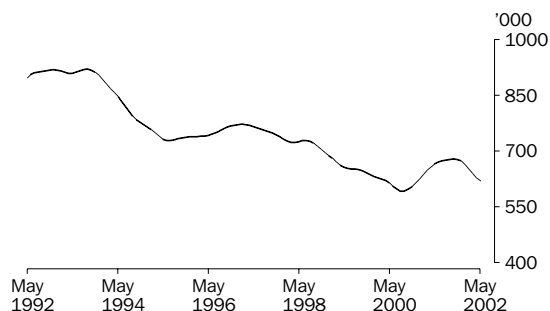
EMPLOYED PERSONS

The trend estimate of employed persons generally rose from a low of 7,634,000 in January 1993 to 9,126,300 in September 2000. While the trend fell slightly to 9,113,100 in December 2000, it has since risen to stand at 9,302,700 in May 2002.



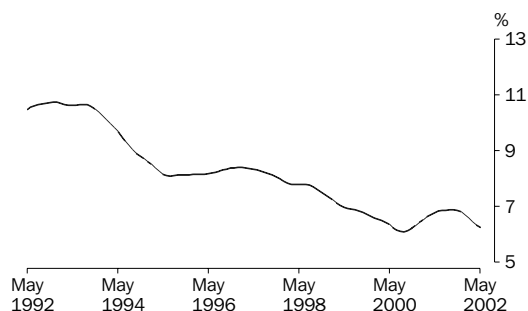
UNEMPLOYED PERSONS

The trend estimate of unemployed persons peaked at 920,600 in September 1993, before falling rapidly to 728,100 in July 1995. The trend then rose slowly, reaching 771,600 in February 1997 before falling to 591,800 in September 2000. The trend then rose to 678,000 in October 2001, before falling to stand at 619,600 in May 2002.



UNEMPLOYMENT RATE

After reaching a high of 10.7% in late 1992, the trend unemployment rate remained steady for twelve months, before falling rapidly to 8.1% in July 1995. The trend then rose slowly until February 1997, before falling to 6.1% in September 2000. The trend rate then rose to 6.9% in October 2001, before falling to 6.2% in May 2002.

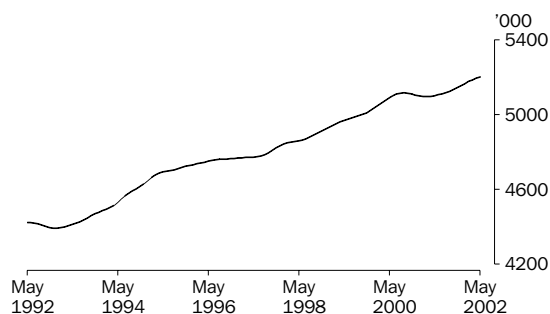


EMPLOYED PERSONS: Trend estimates

EMPLOYED MALES

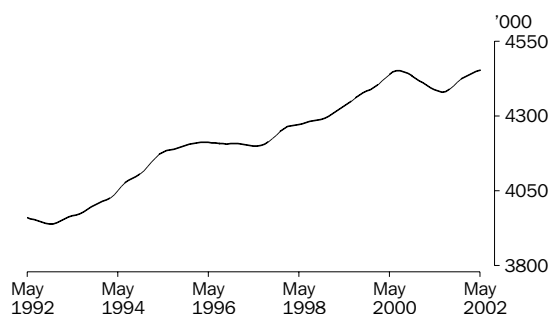
TOTAL

From a low of 4,391,200 in January 1993, the trend estimate of employed males rose to 5,116,100 in September 2000. The trend then fell to 5,095,700 in March 2001, before rising to stand at 5,201,200 in May 2002.



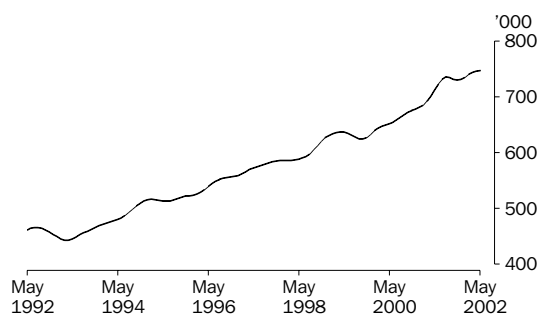
MALES EMPLOYED FULL TIME

Apart from a flat period between June 1995 and June 1997, the trend estimate of males employed full-time rose strongly, from 3,938,900 in December 1992 to a peak of 4,451,000 in August 2000. The trend then fell until July 2001, before rising to 4,453,800 in May 2002.



MALES EMPLOYED PART TIME

The trend estimate of males employed part-time has risen 62% over the last 10 years, rising from 461,000 in May 1992 to 747,400 in May 2002. The trend estimate showed strong growth during 2001, reaching 735,400 in August 2001, before showing slower growth in recent months.

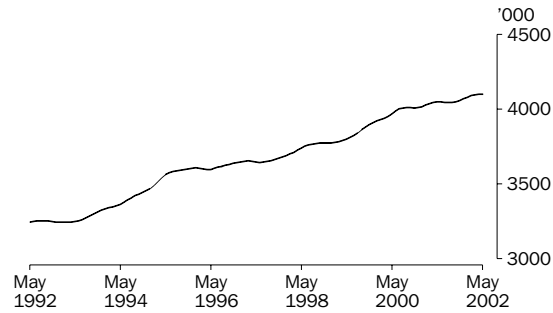


EMPLOYED PERSONS: Trend estimates

EMPLOYED FEMALES

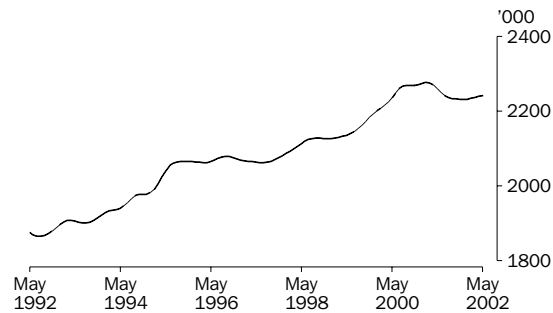
TOTAL

The trend estimate of employed females rose strongly from 3,242,800 in January 1993 to 3,582,100 in July 1995. Since then the trend has continued to rise at a slower rate and stood at 4,101,500 in May 2002.



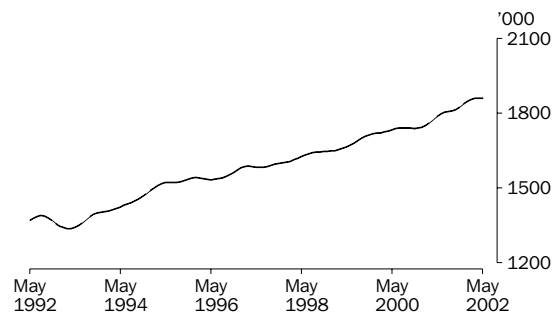
FEMALES EMPLOYED FULL TIME

The trend estimate of females employed full-time rose strongly from 1,865,100 in August 1992 to 2,065,600 in September 1995. The trend then remained relatively flat until July 1997, before rising to 2,276,800 in February 2001. Since then it has fallen to stand at 2,240,800 in May 2002.



FEMALES EMPLOYED PART TIME

Apart from a small decrease between August 1992 and March 1993, the trend estimate of females employed part-time has risen steadily over the last 10 years. In May 2002 the trend estimate was 1,860,700, 36% higher than the May 1992 estimate of 1,368,300.



LABOUR FORCE STATUS (AGED 15 AND OVER): Original

Month	EMPLOYED.....			UNEMPLOYED.....			Labour force	Not in labour force	Civilian population aged 15 and over	Unemployment rate	Participation rate
	Full time	Part time	Total	Looking for f/t work	Looking for p/t work	Total					
	'000	'000	'000	'000	'000	'000					
MALES											
2001											
March	4 379.0	690.8	5 069.8	318.5	65.7	384.2	5 454.0	2 117.1	7 571.1	7.0	72.0
April	4 388.8	712.8	5 101.7	322.1	63.3	385.4	5 487.1	2 092.4	7 579.4	7.0	72.4
May	4 374.1	721.7	5 095.8	316.8	64.9	381.8	5 477.6	2 110.2	7 587.8	7.0	72.2
June	4 359.3	744.2	5 103.5	316.9	60.6	377.4	5 481.0	2 115.1	7 596.1	6.9	72.2
July	4 384.2	748.6	5 132.8	307.1	58.8	365.8	5 498.6	2 106.8	7 605.4	6.7	72.3
August	4 337.6	747.8	5 085.4	319.1	54.4	373.6	5 459.0	2 155.7	7 614.7	6.8	71.7
September	4 431.2	725.0	5 156.2	330.4	66.3	396.7	5 552.9	2 071.1	7 624.0	7.1	72.8
October	4 407.0	740.1	5 147.0	320.3	60.5	380.9	5 527.9	2 105.7	7 633.7	6.9	72.4
November	4 403.3	720.6	5 123.9	317.3	54.1	371.4	5 495.3	2 148.1	7 643.3	6.8	71.9
December	4 501.3	715.0	5 216.3	313.2	63.3	376.5	5 592.8	2 060.2	7 653.0	6.7	73.1
2002											
January	4 428.8	695.9	5 124.7	353.4	69.3	422.8	5 547.5	2 113.8	7 661.3	7.6	72.4
February	4 444.8	723.3	5 168.1	350.0	66.8	416.8	5 584.8	2 084.7	7 669.5	7.5	72.8
March	4 416.7	758.7	5 175.3	310.3	71.2	381.5	5 556.9	2 120.9	7 677.8	6.9	72.4
April	4 412.8	769.0	5 181.8	300.5	70.0	370.5	5 552.4	2 135.7	7 688.0	6.7	72.2
May	4 446.0	746.8	5 192.7	298.5	65.7	364.1	5 556.9	2 141.4	7 698.3	6.6	72.2
FEMALES											
2001											
March	2 284.9	1 736.2	4 021.0	169.6	121.7	291.3	4 312.4	3 474.1	7 786.4	6.8	55.4
April	2 240.1	1 813.8	4 053.9	169.9	113.9	283.8	4 337.7	3 456.5	7 794.1	6.5	55.7
May	2 241.1	1 797.0	4 038.2	184.0	106.0	289.9	4 328.1	3 473.7	7 801.8	6.7	55.5
June	2 230.8	1 830.4	4 061.2	179.1	97.8	276.9	4 338.1	3 471.4	7 809.5	6.4	55.5
July	2 236.0	1 822.2	4 058.2	167.1	84.7	251.8	4 310.0	3 508.4	7 818.4	5.8	55.1
August	2 206.0	1 832.8	4 038.8	175.5	94.9	270.4	4 309.2	3 518.1	7 827.2	6.3	55.1
September	2 286.5	1 812.4	4 098.9	179.3	96.6	275.9	4 374.7	3 461.4	7 836.1	6.3	55.8
October	2 232.2	1 825.4	4 057.6	183.1	96.1	279.2	4 336.8	3 508.5	7 845.2	6.4	55.3
November	2 229.4	1 837.1	4 066.5	170.1	87.9	258.1	4 324.6	3 529.8	7 854.3	6.0	55.1
December	2 263.2	1 834.8	4 098.1	185.5	99.5	285.0	4 383.0	3 480.4	7 863.5	6.5	55.7
2002											
January	2 249.0	1 750.1	3 999.1	208.5	96.0	304.5	4 303.7	3 567.7	7 871.4	7.1	54.7
February	2 236.6	1 826.2	4 062.9	204.5	104.9	309.5	4 372.3	3 507.0	7 879.3	7.1	55.5
March	2 239.1	1 853.1	4 092.2	178.3	102.1	280.4	4 372.6	3 514.6	7 887.2	6.4	55.4
April	2 196.6	1 880.7	4 077.2	171.5	88.1	259.6	4 336.8	3 560.7	7 897.5	6.0	54.9
May	2 217.5	1 873.7	4 091.2	166.2	96.0	262.1	4 353.3	3 554.5	7 907.8	6.0	55.1
PERSONS											
2001											
March	6 663.9	2 427.0	9 090.8	488.1	187.5	675.5	9 766.4	5 591.2	15 357.6	6.9	63.6
April	6 628.9	2 526.6	9 155.5	492.0	177.2	669.2	9 824.8	5 548.8	15 373.6	6.8	63.9
May	6 615.2	2 518.8	9 133.9	500.8	170.9	671.7	9 805.6	5 583.9	15 389.6	6.9	63.7
June	6 590.1	2 574.7	9 164.7	496.0	158.3	654.3	9 819.1	5 586.6	15 405.6	6.7	63.7
July	6 620.2	2 570.8	9 191.0	474.2	143.5	617.6	9 808.6	5 615.2	15 423.8	6.3	63.6
August	6 543.6	2 580.6	9 124.2	494.6	149.3	644.0	9 768.2	5 673.7	15 441.9	6.6	63.3
September	6 717.6	2 537.4	9 255.0	509.7	162.8	672.5	9 927.6	5 532.5	15 460.1	6.8	64.2
October	6 639.2	2 565.4	9 204.6	503.4	156.7	660.1	9 864.7	5 614.2	15 478.9	6.7	63.7
November	6 632.7	2 557.7	9 190.4	487.5	142.0	629.5	9 819.8	5 677.8	15 497.7	6.4	63.4
December	6 764.5	2 549.9	9 314.4	498.7	162.8	661.5	9 975.8	5 540.6	15 516.5	6.6	64.3
2002											
January	6 677.8	2 446.0	9 123.8	561.9	165.3	727.3	9 851.1	5 681.6	15 532.7	7.4	63.4
February	6 681.4	2 549.5	9 230.9	554.5	171.7	726.2	9 957.2	5 591.7	15 548.8	7.3	64.0
March	6 655.8	2 611.8	9 267.6	488.7	173.3	661.9	9 929.5	5 635.5	15 565.0	6.7	63.8
April	6 609.4	2 649.7	9 259.1	472.0	158.1	630.1	9 889.2	5 696.4	15 585.6	6.4	63.5
May	6 663.5	2 620.4	9 283.9	464.6	161.7	626.3	9 910.2	5 695.9	15 606.1	6.3	63.5

LABOUR FORCE STATUS (AGED 15 AND OVER): **Seasonally adjusted**

Month	EMPLOYED.....			UNEMPLOYED.....			Labour force '000	Unemp- loyment rate %	Partic- ipation rate %
	Full time '000	Part time '000	Total '000	Looking for f/t work '000	Looking for p/t work '000	Total '000			
MALES									
2001									
March	4 402.1	687.2	5 089.3	314.0	57.6	371.6	5 460.9	6.8	72.1
April	4 405.6	697.0	5 102.6	326.9	60.0	386.9	5 489.5	7.0	72.4
May	4 400.9	708.4	5 109.3	320.8	63.6	384.4	5 493.7	7.0	72.4
June	4 379.2	718.4	5 097.5	324.4	65.9	390.3	5 487.8	7.1	72.2
July	4 355.3	751.8	5 107.1	325.0	67.2	392.2	5 499.4	7.1	72.3
August	4 382.5	743.9	5 126.4	325.9	60.8	386.7	5 513.0	7.0	72.4
September	4 404.1	718.8	5 122.9	327.7	60.4	388.1	5 511.1	7.0	72.3
October	4 399.9	734.9	5 134.7	337.1	64.3	401.4	5 536.2	7.3	72.5
November	4 406.5	733.8	5 140.2	326.1	60.7	386.8	5 527.0	7.0	72.3
December	4 424.3	725.8	5 150.1	316.2	59.6	375.7	5 525.8	6.8	72.2
2002									
January	4 447.6	715.8	5 163.4	323.2	68.5	391.8	5 555.2	7.1	72.5
February	4 431.7	752.3	5 184.0	320.9	61.6	382.4	5 566.4	6.9	72.6
March	4 440.6	755.0	5 195.6	306.3	62.5	368.8	5 564.4	6.6	72.5
April	4 429.6	751.7	5 181.4	304.8	66.3	371.0	5 552.4	6.7	72.2
May	4 473.7	733.0	5 206.7	301.9	64.2	366.1	5 572.8	6.6	72.4
FEMALES									
2001									
March	2 306.6	1 731.5	4 038.1	159.5	102.4	261.9	4 300.0	6.1	55.2
April	2 259.3	1 797.1	4 056.4	167.2	106.4	273.6	4 330.0	6.3	55.6
May	2 270.9	1 775.6	4 046.6	180.4	103.5	283.9	4 330.4	6.6	55.5
June	2 251.9	1 797.9	4 049.8	186.0	99.5	285.5	4 335.3	6.6	55.5
July	2 201.6	1 824.7	4 026.3	185.3	96.3	281.6	4 307.9	6.5	55.1
August	2 241.1	1 826.7	4 067.8	187.2	97.4	284.6	4 352.4	6.5	55.6
September	2 269.1	1 766.5	4 035.6	181.3	93.1	274.5	4 310.1	6.4	55.0
October	2 223.2	1 821.5	4 044.6	190.9	101.2	292.2	4 336.8	6.7	55.3
November	2 231.3	1 820.2	4 051.5	184.0	100.1	284.1	4 335.6	6.6	55.2
December	2 212.9	1 836.1	4 048.9	182.3	107.3	289.5	4 338.5	6.7	55.2
2002									
January	2 239.4	1 859.9	4 099.3	195.3	105.4	300.7	4 400.1	6.8	55.9
February	2 232.4	1 866.7	4 099.1	180.7	89.4	270.1	4 369.2	6.2	55.5
March	2 260.0	1 848.6	4 108.7	167.8	85.7	253.5	4 362.2	5.8	55.3
April	2 215.8	1 863.6	4 079.4	168.6	82.0	250.6	4 330.0	5.8	54.8
May	2 247.0	1 851.5	4 098.5	162.6	93.8	256.4	4 354.8	5.9	55.1
PERSONS									
2001									
March	6 708.7	2 418.7	9 127.4	473.5	160.0	633.5	9 761.0	6.5	63.6
April	6 664.9	2 494.2	9 159.1	494.1	166.3	660.5	9 819.5	6.7	63.9
May	6 671.8	2 484.0	9 155.9	501.2	167.1	668.3	9 824.2	6.8	63.8
June	6 631.1	2 516.2	9 147.3	510.4	165.4	675.8	9 823.1	6.9	63.8
July	6 557.0	2 576.5	9 133.4	510.3	163.5	673.8	9 807.2	6.9	63.6
August	6 623.5	2 570.6	9 194.1	513.0	158.2	671.3	9 865.4	6.8	63.9
September	6 673.2	2 485.4	9 158.6	509.0	153.6	662.6	9 821.2	6.7	63.5
October	6 623.0	2 556.4	9 179.4	528.0	165.6	693.6	9 873.0	7.0	63.8
November	6 637.8	2 554.0	9 191.8	510.1	160.8	670.9	9 862.7	6.8	63.6
December	6 637.2	2 561.8	9 199.0	498.4	166.9	665.3	9 864.3	6.7	63.6
2002									
January	6 687.0	2 575.7	9 262.7	518.6	174.0	692.5	9 955.2	7.0	64.1
February	6 664.1	2 619.0	9 283.1	501.6	150.9	652.5	9 935.7	6.6	63.9
March	6 700.6	2 603.7	9 304.3	474.1	148.2	622.3	9 926.6	6.3	63.8
April	6 645.5	2 615.3	9 260.8	473.4	148.2	621.6	9 882.4	6.3	63.4
May	6 720.7	2 584.4	9 305.2	464.5	158.0	622.5	9 927.7	6.3	63.6

LABOUR FORCE STATUS (AGED 15 AND OVER): Trend(a)

Month	EMPLOYED.....			UNEMPLOYED.....			Labour force '000	Unemp- loyment rate %	Partic- ipation rate %
	Full time '000	Part time '000	Total '000	Looking for f/t work '000	Looking for p/t work '000	Total '000			
MALES									
2001									
March	4 403.5	692.2	5 095.7	319.5	59.1	378.5	5 474.2	6.9	72.3
April	4 395.3	702.0	5 097.3	321.6	61.1	382.7	5 480.0	7.0	72.3
May	4 388.0	712.9	5 100.9	323.1	62.8	385.9	5 486.8	7.0	72.3
June	4 382.7	723.2	5 105.9	324.8	63.9	388.7	5 494.6	7.1	72.3
July	4 380.3	731.4	5 111.7	326.4	64.1	390.5	5 502.2	7.1	72.3
August	4 382.4	735.4	5 117.8	327.7	63.5	391.2	5 509.0	7.1	72.3
September	4 389.9	734.7	5 124.6	328.6	62.7	391.3	5 515.9	7.1	72.3
October	4 401.6	731.6	5 133.2	328.4	62.1	390.5	5 523.7	7.1	72.4
November	4 413.6	729.8	5 143.3	327.0	62.0	389.0	5 532.3	7.0	72.4
December	4 423.3	730.9	5 154.2	323.9	62.4	386.3	5 540.6	7.0	72.4
2002									
January	4 430.3	735.1	5 165.4	319.7	63.1	382.8	5 548.2	6.9	72.4
February	4 436.5	739.9	5 176.4	315.0	63.6	378.7	5 555.1	6.8	72.4
March	4 442.7	743.6	5 186.3	310.6	64.1	374.7	5 561.0	6.7	72.4
April	4 448.7	745.9	5 194.6	306.5	64.4	370.8	5 565.4	6.7	72.4
May	4 453.8	747.4	5 201.2	303.5	64.8	368.3	5 569.5	6.6	72.4
FEMALES									
2001									
March	2 275.9	1 761.3	4 037.2	166.7	102.1	268.8	4 306.0	6.2	55.3
April	2 270.2	1 774.1	4 044.2	171.2	102.8	274.0	4 318.3	6.3	55.4
May	2 260.6	1 786.7	4 047.3	176.4	102.1	278.5	4 325.8	6.4	55.4
June	2 250.5	1 797.0	4 047.5	181.4	100.2	281.6	4 329.1	6.5	55.4
July	2 241.9	1 804.0	4 045.9	184.7	98.2	282.9	4 328.8	6.5	55.4
August	2 236.5	1 807.2	4 043.7	186.3	97.5	283.8	4 327.4	6.6	55.3
September	2 233.7	1 809.7	4 043.4	187.1	98.3	285.4	4 328.8	6.6	55.2
October	2 232.6	1 815.3	4 047.9	187.3	100.2	287.5	4 335.3	6.6	55.3
November	2 231.9	1 825.0	4 056.8	187.3	101.3	288.6	4 345.4	6.6	55.3
December	2 231.8	1 836.4	4 068.2	186.1	100.6	286.8	4 355.0	6.6	55.4
2002									
January	2 232.1	1 847.6	4 079.7	183.4	98.0	281.4	4 361.1	6.5	55.4
February	2 234.2	1 855.2	4 089.4	179.2	94.4	273.6	4 363.0	6.3	55.4
March	2 237.0	1 858.9	4 096.0	174.3	90.8	265.2	4 361.1	6.1	55.3
April	2 239.6	1 860.1	4 099.7	169.4	87.9	257.4	4 357.0	5.9	55.2
May	2 240.8	1 860.7	4 101.5	165.4	85.9	251.3	4 352.8	5.8	55.1
PERSONS									
2001									
March	6 679.4	2 453.5	9 132.9	486.2	161.1	647.3	9 780.3	6.6	63.7
April	6 665.5	2 476.0	9 141.5	492.8	163.9	656.7	9 798.2	6.7	63.7
May	6 648.7	2 499.6	9 148.2	499.5	164.9	664.4	9 812.6	6.8	63.8
June	6 633.2	2 520.2	9 153.4	506.2	164.1	670.3	9 823.7	6.8	63.8
July	6 622.1	2 535.4	9 157.6	511.1	162.3	673.4	9 831.0	6.8	63.7
August	6 618.9	2 542.6	9 161.5	514.0	160.9	675.0	9 836.4	6.9	63.7
September	6 623.6	2 544.5	9 168.0	515.7	161.0	676.7	9 844.7	6.9	63.7
October	6 634.2	2 546.9	9 181.1	515.7	162.3	678.0	9 859.1	6.9	63.7
November	6 645.4	2 554.7	9 200.2	514.2	163.3	677.6	9 877.7	6.9	63.7
December	6 655.1	2 567.3	9 222.5	510.0	163.1	673.1	9 895.6	6.8	63.8
2002									
January	6 662.4	2 582.7	9 245.1	503.0	161.1	664.2	9 909.2	6.7	63.8
February	6 670.7	2 595.2	9 265.8	494.2	158.0	652.3	9 918.1	6.6	63.8
March	6 679.7	2 602.6	9 282.3	484.9	154.9	639.8	9 922.1	6.4	63.7
April	6 688.3	2 606.0	9 294.3	475.9	152.3	628.2	9 922.5	6.3	63.7
May	6 694.5	2 608.2	9 302.7	468.9	150.8	619.6	9 922.4	6.2	63.6

(a) Trend estimates for November 2001 to April 2002 have been revised.

UNEMPLOYED PERSONS: Original

Month	NUMBER OF UNEMPLOYED PERSONS.....					UNEMPLOYMENT RATE.....					UNEMPLOYMENT TO POPULATION RATIO	
	Aged 15-19 looking for f/t work	Aged 20 and over looking for f/t work	Total looking for f/t work	Looking for p/t work	Total	Aged 15-19 looking for f/t work	Aged 20 and over looking for f/t work	Total looking for f/t work	Looking for p/t work	Total	Aged 15-19 looking for f/t work	Aged 20 and over looking for f/t work
	'000	'000	'000	'000	'000	%	%	%	%	%	%	%
MALES												
2001												
March	43.8	274.7	318.5	65.7	384.2	24.2	6.1	6.8	8.7	7.0	6.3	4.0
April	43.3	278.8	322.1	63.3	385.4	23.3	6.2	6.8	8.2	7.0	6.2	4.1
May	41.3	275.5	316.8	64.9	381.8	23.1	6.1	6.8	8.3	7.0	5.9	4.0
June	44.0	272.8	316.9	60.6	377.4	23.1	6.1	6.8	7.5	6.9	6.3	4.0
July	36.3	270.8	307.1	58.8	365.8	19.1	6.0	6.5	7.3	6.7	5.2	3.9
August	39.0	280.1	319.1	54.4	373.6	21.5	6.3	6.9	6.8	6.8	5.6	4.0
September	43.3	287.1	330.4	66.3	396.7	23.5	6.3	6.9	8.4	7.1	6.2	4.1
October	43.1	277.3	320.3	60.5	380.9	23.3	6.1	6.8	7.6	6.9	6.2	4.0
November	42.3	275.0	317.3	54.1	371.4	24.6	6.0	6.7	7.0	6.8	6.1	4.0
December	49.5	263.7	313.2	63.3	376.5	23.4	5.7	6.5	8.1	6.7	7.1	3.8
2002												
January	49.5	303.9	353.4	69.3	422.8	24.5	6.6	7.4	9.1	7.6	7.1	4.4
February	50.7	299.3	350.0	66.8	416.8	25.5	6.5	7.3	8.5	7.5	7.3	4.3
March	37.2	273.1	310.3	71.2	381.5	20.2	6.0	6.6	8.6	6.9	5.3	3.9
April	37.9	262.6	300.5	70.0	370.5	20.9	5.8	6.4	8.3	6.7	5.4	3.8
May	34.5	263.9	298.5	65.7	364.1	19.7	5.8	6.3	8.1	6.6	4.9	3.8
FEMALES												
2001												
March	26.9	142.7	169.6	121.7	291.3	24.1	6.1	6.9	6.6	6.8	4.1	2.0
April	26.2	143.7	169.9	113.9	283.8	23.0	6.3	7.0	5.9	6.5	4.0	2.0
May	27.9	156.1	184.0	106.0	289.9	25.1	6.7	7.6	5.6	6.7	4.2	2.2
June	31.5	147.6	179.1	97.8	276.9	27.4	6.4	7.4	5.1	6.4	4.7	2.1
July	29.1	138.0	167.1	84.7	251.8	25.3	6.0	7.0	4.4	5.8	4.4	1.9
August	25.3	150.1	175.5	94.9	270.4	24.3	6.6	7.4	4.9	6.3	3.8	2.1
September	27.8	151.5	179.3	96.6	275.9	25.2	6.4	7.3	5.1	6.3	4.2	2.1
October	29.1	154.0	183.1	96.1	279.2	25.6	6.7	7.6	5.0	6.4	4.4	2.1
November	28.6	141.5	170.1	87.9	258.1	25.5	6.2	7.1	4.6	6.0	4.3	2.0
December	34.6	150.9	185.5	99.5	285.0	27.3	6.5	7.6	5.1	6.5	5.2	2.1
2002												
January	37.7	170.8	208.5	96.0	304.5	28.4	7.3	8.5	5.2	7.1	5.7	2.4
February	31.3	173.2	204.5	104.9	309.5	26.9	7.4	8.4	5.4	7.1	4.7	2.4
March	30.7	147.6	178.3	102.1	280.4	29.5	6.4	7.4	5.2	6.4	4.6	2.0
April	25.7	145.7	171.5	88.1	259.6	26.0	6.4	7.2	4.5	6.0	3.9	2.0
May	28.7	137.4	166.2	96.0	262.1	27.6	6.0	7.0	4.9	6.0	4.3	1.9
PERSONS												
2001												
March	70.7	417.4	488.1	187.5	675.5	24.2	6.1	6.8	7.2	6.9	5.2	3.0
April	69.5	422.5	492.0	177.2	669.2	23.2	6.2	6.9	6.6	6.8	5.1	3.0
May	69.2	431.6	500.8	170.9	671.7	23.9	6.3	7.0	6.4	6.9	5.1	3.1
June	75.5	420.5	496.0	158.3	654.3	24.7	6.2	7.0	5.8	6.7	5.5	3.0
July	65.4	408.8	474.2	143.5	617.6	21.4	6.0	6.7	5.3	6.3	4.8	2.9
August	64.3	430.3	494.6	149.3	644.0	22.5	6.4	7.0	5.5	6.6	4.7	3.1
September	71.1	438.6	509.7	162.8	672.5	24.1	6.3	7.1	6.0	6.8	5.2	3.1
October	72.1	431.3	503.4	156.7	660.1	24.2	6.3	7.0	5.8	6.7	5.3	3.1
November	70.9	416.5	487.5	142.0	629.5	24.9	6.1	6.8	5.3	6.4	5.2	2.9
December	84.1	414.6	498.7	162.8	661.5	24.9	6.0	6.9	6.0	6.6	6.2	2.9
2002												
January	87.2	474.7	561.9	165.3	727.3	26.1	6.9	7.8	6.3	7.4	6.4	3.4
February	82.0	472.5	554.5	171.7	726.2	26.0	6.8	7.7	6.3	7.3	6.0	3.3
March	67.9	420.8	488.7	173.3	661.9	23.6	6.1	6.8	6.2	6.7	5.0	3.0
April	63.6	408.3	472.0	158.1	630.1	22.7	6.0	6.7	5.6	6.4	4.7	2.9
May	63.3	401.4	464.6	161.7	626.3	22.6	5.9	6.5	5.8	6.3	4.6	2.8

UNEMPLOYED PERSONS: Seasonally adjusted

Month	NUMBER OF UNEMPLOYED PERSONS....					UNEMPLOYMENT RATE.....					UNEMPLOYMENT TO POPULATION RATIO	
	Aged 15-19 looking for f/t work	Aged 20 and over looking for f/t work	Total looking for f/t work	Looking for p/t work	Total	Aged 15-19 looking for f/t work	Aged 20 and over looking for f/t work	Total looking for f/t work	Looking for p/t work	Total	Aged 15-19 looking for f/t work	Aged 20 and over looking for f/t work
	'000	'000	'000	'000	'000	%	%	%	%	%	%	%
MALES												
2001												
March	42.7	271.3	314.0	57.6	371.6	23.1	6.0	6.7	7.7	6.8	6.1	3.9
April	43.9	283.0	326.9	60.0	386.9	23.4	6.2	6.9	7.9	7.0	6.3	4.1
May	43.5	277.3	320.8	63.6	384.4	23.2	6.1	6.8	8.2	7.0	6.3	4.0
June	45.5	278.9	324.4	65.9	390.3	23.1	6.2	6.9	8.4	7.1	6.5	4.0
July	40.5	284.5	325.0	67.2	392.2	21.5	6.3	6.9	8.2	7.1	5.8	4.1
August	45.1	280.8	325.9	60.8	386.7	23.0	6.2	6.9	7.6	7.0	6.5	4.1
September	47.1	280.6	327.7	60.4	388.1	24.6	6.2	6.9	7.8	7.0	6.8	4.1
October	49.4	287.7	337.1	64.3	401.4	25.2	6.3	7.1	8.0	7.3	7.1	4.1
November	44.5	281.6	326.1	60.7	386.8	24.6	6.2	6.9	7.6	7.0	6.4	4.1
December	41.4	274.8	316.2	59.6	375.7	22.1	6.0	6.7	7.6	6.8	5.9	4.0
2002												
January	39.3	283.9	323.2	68.5	391.8	21.6	6.2	6.8	8.7	7.1	5.6	4.1
February	45.5	275.3	320.9	61.6	382.4	24.5	6.0	6.8	7.6	6.9	6.5	3.9
March	36.2	270.0	306.3	62.5	368.8	19.3	5.9	6.5	7.6	6.6	5.2	3.9
April	38.4	266.3	304.8	66.3	371.0	21.1	5.9	6.4	8.1	6.7	5.5	3.8
May	36.5	265.4	301.9	64.2	366.1	19.8	5.8	6.3	8.1	6.6	5.2	3.8
FEMALES												
2001												
March	26.8	132.7	159.5	102.4	261.9	23.2	5.6	6.5	5.6	6.1	4.0	1.9
April	26.5	140.7	167.2	106.4	273.6	22.9	6.1	6.9	5.6	6.3	4.0	2.0
May	26.9	153.4	180.4	103.5	283.9	23.3	6.6	7.4	5.5	6.6	4.1	2.1
June	35.4	150.6	186.0	99.5	285.5	28.4	6.5	7.6	5.2	6.6	5.3	2.1
July	31.9	153.4	185.3	96.3	281.6	27.7	6.8	7.8	5.0	6.5	4.8	2.1
August	29.4	157.8	187.2	97.4	284.6	25.4	6.8	7.7	5.1	6.5	4.4	2.2
September	31.1	150.3	181.3	93.1	274.5	26.3	6.4	7.4	5.0	6.4	4.7	2.1
October	32.6	158.4	190.9	101.2	292.2	27.2	6.9	7.9	5.3	6.7	4.9	2.2
November	30.6	153.4	184.0	100.1	284.1	26.1	6.7	7.6	5.2	6.6	4.6	2.1
December	27.2	155.0	182.3	107.3	289.5	25.0	6.8	7.6	5.5	6.7	4.1	2.2
2002												
January	32.4	162.9	195.3	105.4	300.7	28.5	7.0	8.0	5.4	6.8	4.9	2.3
February	27.2	153.5	180.7	89.4	270.1	25.6	6.7	7.5	4.6	6.2	4.1	2.1
March	30.6	137.2	167.8	85.7	253.5	28.4	5.9	6.9	4.4	5.8	4.6	1.9
April	26.0	142.6	168.6	82.0	250.6	25.9	6.2	7.1	4.2	5.8	3.9	2.0
May	27.6	134.9	162.6	93.8	256.4	25.6	5.9	6.7	4.8	5.9	4.1	1.9
PERSONS												
2001												
March	69.5	404.1	473.5	160.0	633.5	23.1	5.9	6.6	6.2	6.5	5.1	2.9
April	70.5	423.7	494.1	166.3	660.5	23.2	6.2	6.9	6.3	6.7	5.2	3.0
May	70.4	430.7	501.2	167.1	668.3	23.2	6.3	7.0	6.3	6.8	5.2	3.1
June	80.9	429.5	510.4	165.4	675.8	25.1	6.3	7.1	6.2	6.9	5.9	3.1
July	72.4	437.9	510.3	163.5	673.8	23.9	6.5	7.2	6.0	6.9	5.3	3.1
August	74.5	438.6	513.0	158.2	671.3	23.9	6.4	7.2	5.8	6.8	5.5	3.1
September	78.2	430.9	509.0	153.6	662.6	25.2	6.3	7.1	5.8	6.7	5.7	3.1
October	81.9	446.1	528.0	165.6	693.6	25.9	6.5	7.4	6.1	7.0	6.0	3.2
November	75.1	434.9	510.1	160.8	670.9	25.2	6.3	7.1	5.9	6.8	5.5	3.1
December	68.6	429.8	498.4	166.9	665.3	23.2	6.3	7.0	6.1	6.7	5.0	3.0
2002												
January	71.7	446.8	518.6	174.0	692.5	24.3	6.5	7.2	6.3	7.0	5.3	3.2
February	72.8	428.8	501.6	150.9	652.5	24.9	6.2	7.0	5.4	6.6	5.3	3.0
March	66.9	407.2	474.1	148.2	622.3	22.6	5.9	6.6	5.4	6.3	4.9	2.9
April	64.5	408.9	473.4	148.2	621.6	22.8	6.0	6.6	5.4	6.3	4.7	2.9
May	64.1	400.4	464.5	158.0	622.5	21.9	5.8	6.5	5.8	6.3	4.7	2.8

UNEMPLOYED PERSONS: Trend(a)

Month	NUMBER OF UNEMPLOYED PERSONS.....					UNEMPLOYMENT RATE.....					UNEMPLOYMENT TO POPULATION RATIO	
	<i>Aged 15-19 looking for f/t work</i>	<i>Aged 20 and over looking for f/t work</i>	<i>Total looking for f/t work</i>	<i>Looking for p/t work</i>	<i>Total</i>	<i>Aged 15-19 looking for f/t work</i>	<i>Aged 20 and over looking for f/t work</i>	<i>Total looking for f/t work</i>	<i>Looking for p/t work</i>	<i>Total</i>	<i>Aged 15-19 looking for f/t work</i>	<i>Aged 20 and over looking for f/t work</i>
	'000	'000	'000	'000	'000	%	%	%	%	%	%	%
MALES												
2001												
March	44.6	274.9	319.5	59.1	378.5	24.0	6.1	6.8	7.9	6.9	6.4	4.0
April	44.3	277.3	321.6	61.1	382.7	23.7	6.1	6.8	8.0	7.0	6.4	4.0
May	43.9	279.2	323.1	62.8	385.9	23.2	6.2	6.9	8.1	7.0	6.3	4.1
June	44.0	280.8	324.8	63.9	388.7	22.9	6.2	6.9	8.1	7.1	6.3	4.1
July	44.5	281.9	326.4	64.1	390.5	23.1	6.2	6.9	8.1	7.1	6.4	4.1
August	45.2	282.5	327.7	63.5	391.2	23.4	6.3	7.0	7.9	7.1	6.5	4.1
September	45.7	282.9	328.6	62.7	391.3	23.8	6.2	7.0	7.9	7.1	6.6	4.1
October	45.6	282.8	328.4	62.1	390.5	24.0	6.2	6.9	7.8	7.1	6.5	4.1
November	44.9	282.1	327.0	62.0	389.0	23.9	6.2	6.9	7.8	7.0	6.4	4.1
December	43.6	280.3	323.9	62.4	386.3	23.4	6.1	6.8	7.9	7.0	6.3	4.0
2002												
January	41.9	277.7	319.7	63.1	382.8	22.7	6.1	6.7	7.9	6.9	6.0	4.0
February	40.4	274.7	315.0	63.6	378.7	21.9	6.0	6.6	7.9	6.8	5.8	3.9
March	39.1	271.5	310.6	64.1	374.7	21.2	5.9	6.5	7.9	6.7	5.6	3.9
April	37.9	268.5	306.5	64.4	370.8	20.6	5.9	6.4	7.9	6.7	5.4	3.8
May	37.2	266.3	303.5	64.8	368.3	20.1	5.8	6.4	8.0	6.6	5.3	3.8
FEMALES												
2001												
March	28.3	138.4	166.7	102.1	268.8	23.9	6.0	6.8	5.5	6.2	4.3	1.9
April	29.0	142.2	171.2	102.8	274.0	24.5	6.1	7.0	5.5	6.3	4.4	2.0
May	29.7	146.7	176.4	102.1	278.5	25.2	6.3	7.2	5.4	6.4	4.5	2.1
June	30.5	150.9	181.4	100.2	281.6	25.9	6.5	7.5	5.3	6.5	4.6	2.1
July	31.2	153.5	184.7	98.2	282.9	26.4	6.6	7.6	5.2	6.5	4.7	2.1
August	31.5	154.8	186.3	97.5	283.8	26.7	6.7	7.7	5.1	6.6	4.7	2.2
September	31.4	155.6	187.1	98.3	285.4	26.7	6.8	7.7	5.2	6.6	4.7	2.2
October	31.0	156.3	187.3	100.2	287.5	26.5	6.8	7.7	5.2	6.6	4.7	2.2
November	30.5	156.8	187.3	101.3	288.6	26.4	6.8	7.7	5.3	6.6	4.6	2.2
December	30.0	156.1	186.1	100.6	286.8	26.5	6.8	7.7	5.2	6.6	4.5	2.2
2002												
January	29.6	153.8	183.4	98.0	281.4	26.7	6.7	7.6	5.0	6.5	4.4	2.1
February	29.0	150.2	179.2	94.4	273.6	26.8	6.5	7.4	4.8	6.3	4.4	2.1
March	28.4	145.9	174.3	90.8	265.2	26.7	6.3	7.2	4.7	6.1	4.3	2.0
April	27.9	141.5	169.4	87.9	257.4	26.6	6.1	7.0	4.5	5.9	4.2	2.0
May	27.5	137.9	165.4	85.9	251.3	26.4	6.0	6.9	4.4	5.8	4.1	1.9
PERSONS												
2001												
March	72.9	413.3	486.2	161.1	647.3	24.0	6.0	6.8	6.2	6.6	5.4	3.0
April	73.3	419.5	492.8	163.9	656.7	24.0	6.1	6.9	6.2	6.7	5.4	3.0
May	73.6	425.9	499.5	164.9	664.4	24.0	6.2	7.0	6.2	6.8	5.4	3.0
June	74.5	431.7	506.2	164.1	670.3	24.1	6.3	7.1	6.1	6.8	5.5	3.1
July	75.7	435.4	511.1	162.3	673.4	24.3	6.4	7.2	6.0	6.8	5.6	3.1
August	76.8	437.3	514.0	160.9	675.0	24.7	6.4	7.2	6.0	6.9	5.6	3.1
September	77.2	438.5	515.7	161.0	676.7	24.9	6.4	7.2	6.0	6.9	5.7	3.1
October	76.6	439.1	515.7	162.3	678.0	25.0	6.4	7.2	6.0	6.9	5.6	3.1
November	75.4	438.8	514.2	163.3	677.6	24.9	6.4	7.2	6.0	6.9	5.5	3.1
December	73.6	436.4	510.0	163.1	673.1	24.6	6.4	7.1	6.0	6.8	5.4	3.1
2002												
January	71.5	431.5	503.0	161.1	664.2	24.2	6.3	7.0	5.9	6.7	5.2	3.0
February	69.4	424.9	494.2	158.0	652.3	23.7	6.2	6.9	5.7	6.6	5.1	3.0
March	67.5	417.4	484.9	154.9	639.8	23.2	6.1	6.8	5.6	6.4	4.9	2.9
April	65.8	410.0	475.9	152.3	628.2	22.7	6.0	6.6	5.5	6.3	4.8	2.9
May	64.7	404.1	468.9	150.8	619.6	22.4	5.9	6.5	5.5	6.2	4.7	2.8

(a) Trend estimates for November 2001 to April 2002 have been revised.

PERSONS AGED 15 TO 19, Education and Labour Force: **Original**—May 2002

	EMPLOYED.....			UNEMPLOYED.....			Labour force	Not in labour force	Civilian population aged 15-19	Unemployment rate	Participation rate
	Full time	Part time	Total	Looking for f/t work	Looking for p/t work	Total					
	'000	'000	'000	'000	'000	'000	'000	'000	'000	%	%
ATTENDING NEITHER SCHOOL NOR A TERTIARY EDUCATIONAL INSTITUTION FULL TIME											
Males	138.4	39.8	178.2	31.6	* 0.8	32.4	210.6	23.6	234.3	15.4	89.9
Females	73.7	56.4	130.1	25.7	* 2.7	28.3	158.4	30.4	188.8	17.9	83.9
Persons	212.1	96.2	308.3	57.2	* 3.5	60.7	369.0	54.0	423.0	16.4	87.2
ATTENDING A TERTIARY EDUCATIONAL INSTITUTION FULL TIME											
Males	* 1.8	48.2	50.0	* 1.4	13.2	14.6	64.6	58.0	122.6	22.7	52.7
Females	* 1.6	74.6	76.2	* 2.4	10.7	13.1	89.3	55.6	144.8	14.7	61.6
Persons	* 3.3	122.8	126.1	* 3.8	23.9	27.7	153.9	113.5	267.4	18.0	57.5
ATTENDING SCHOOL											
Males	* 1.0	92.6	93.6	* 1.6	21.7	23.2	116.8	224.4	341.2	19.9	34.2
Females	* 0.0	124.7	124.7	* 0.7	19.3	20.0	144.7	189.1	333.8	13.8	43.4
Persons	* 1.0	217.3	218.3	* 2.3	41.0	43.3	261.5	413.5	675.0	16.5	38.7
TOTAL											
Males	141.1	180.6	321.7	34.5	35.7	70.3	392.0	306.0	698.0	17.9	56.2
Females	75.2	255.7	331.0	28.7	32.7	61.4	392.4	275.0	667.4	15.7	58.8
Persons	216.4	436.3	652.7	63.3	68.4	131.7	784.4	581.0	1 365.4	16.8	57.4

LABOUR FORCE STATUS (AGED 15 & OVER), States & Territories: **Original**—May 2002

	EMPLOYED.....			UNEMPLOYED.....							Unemp- loyment rate %	Partic- ipation rate %
	Full time '000	Part time '000	Total '000	Looking for f/t work '000	Looking for p/t work '000	Total '000	Labour force '000	Not in labour force '000	Civilian population aged 15 and over '000			
MALES												
New South Wales	1 496.6	239.7	1 736.3	94.5	20.1	114.6	1 850.9	743.0	2 593.9	6.2	71.4	
Victoria	1 133.3	182.7	1 316.0	66.0	16.9	83.0	1 398.9	530.2	1 929.1	5.9	72.5	
Queensland	821.7	150.2	972.0	62.4	14.2	76.7	1 048.6	387.2	1 435.8	7.3	73.0	
South Australia	321.0	59.8	380.8	27.3	3.9	31.2	412.0	185.0	597.0	7.6	69.0	
Western Australia	460.0	74.9	534.9	32.3	7.0	39.3	574.2	191.9	766.1	6.8	75.0	
Tasmania	92.0	15.7	107.7	9.2	1.8	11.0	118.7	62.8	181.5	9.3	65.4	
Northern Territory	46.0	11.3	57.3	2.6	* 0.7	3.3	60.6	13.4	74.0	5.4	81.9	
Australian Capital Territory	75.4	12.3	87.7	4.1	1.1	5.1	92.8	28.1	120.9	5.5	76.8	
Australia	4 446.0	746.8	5 192.7	298.5	65.7	364.1	5 556.9	2 141.4	7 698.3	6.6	72.2	
FEMALES												
New South Wales	769.5	577.1	1 346.6	53.6	28.1	81.7	1 428.3	1 235.6	2 663.9	5.7	53.6	
Victoria	546.9	490.4	1 037.3	34.9	24.4	59.2	1 096.5	902.2	1 998.7	5.4	54.9	
Queensland	417.0	353.7	770.6	41.8	24.0	65.7	836.4	632.7	1 469.0	7.9	56.9	
South Australia	152.4	156.5	308.9	12.4	7.0	19.3	328.2	293.9	622.1	5.9	52.8	
Western Australia	208.0	201.6	409.6	16.0	8.7	24.7	434.3	332.6	766.9	5.7	56.6	
Tasmania	42.6	48.5	91.0	4.8	1.6	6.4	97.4	94.9	192.3	6.6	50.7	
Northern Territory	28.6	16.0	44.5	* 0.9	* 0.4	1.4	45.9	22.8	68.7	3.0	66.8	
Australian Capital Territory	52.6	30.0	82.7	1.8	1.8	3.6	86.3	40.0	126.2	4.2	68.3	
Australia	2 217.5	1 873.7	4 091.2	166.2	96.0	262.1	4 353.3	3 554.5	7 907.8	6.0	55.1	
PERSONS												
New South Wales	2 266.1	816.8	3 082.9	148.2	48.2	196.3	3 279.3	1 978.5	5 257.8	6.0	62.4	
Victoria	1 680.2	673.1	2 353.3	100.9	41.3	142.2	2 495.4	1 432.4	3 927.8	5.7	63.5	
Queensland	1 238.7	503.9	1 742.6	104.2	38.2	142.4	1 885.0	1 019.9	2 904.8	7.6	64.9	
South Australia	473.4	216.3	689.7	39.6	10.9	50.5	740.2	478.9	1 219.1	6.8	60.7	
Western Australia	668.0	276.4	944.4	48.3	15.7	64.1	1 008.5	524.4	1 532.9	6.4	65.8	
Tasmania	134.5	64.2	198.8	14.1	3.4	17.4	216.2	157.6	373.8	8.1	57.8	
Northern Territory	74.6	27.3	101.9	3.5	1.2	4.7	106.5	36.2	142.7	4.4	74.7	
Australian Capital Territory	128.0	42.4	170.3	5.8	2.9	8.8	179.1	68.0	247.1	4.9	72.5	
Australia	6 663.5	2 620.4	9 283.9	464.6	161.7	626.3	9 910.2	5 695.9	15 606.1	6.3	63.5	

UNEMPLOYED PERSONS—New South Wales, Victoria and Queensland: **Original**

Month	NUMBER OF UNEMPLOYED PERSONS.....					UNEMPLOYMENT RATE.....					UNEMPLOYMENT TO POPULATION RATIO	
	Aged 15-19 looking for f/t work	Aged 20 and over looking for f/t work	Total looking for f/t work	Looking for p/t work	Total	Aged 15-19 looking for f/t work	Aged 20 and over looking for f/t work	Total looking for f/t work	Looking for p/t work	Total	Aged 15-19 looking for f/t work	Aged 20 and over looking for f/t work
	'000	'000	'000	'000	'000	%	%	%	%	%	%	%
NEW SOUTH WALES												
2001												
March	18.2	118.3	136.5	53.0	189.5	20.3	5.1	5.6	6.6	5.9	4.1	2.5
April	18.0	119.2	137.2	49.3	186.5	19.5	5.2	5.7	5.8	5.7	4.0	2.5
May	18.9	120.3	139.2	47.7	186.9	21.2	5.2	5.8	5.6	5.8	4.2	2.5
June	21.7	120.2	142.0	46.8	188.8	22.5	5.2	5.9	5.6	5.8	4.9	2.5
July	20.5	114.2	134.7	39.7	174.4	20.8	4.9	5.6	4.7	5.4	4.6	2.4
August	20.3	128.0	148.3	43.0	191.3	22.2	5.6	6.2	5.0	5.9	4.5	2.7
September	23.4	136.4	159.8	45.1	205.0	25.6	5.8	6.5	5.3	6.2	5.2	2.9
October	21.0	141.1	162.1	41.8	203.9	22.8	6.1	6.7	4.9	6.2	4.7	3.0
November	22.0	135.3	157.3	42.2	199.5	26.1	5.9	6.6	4.9	6.1	4.9	2.8
December	21.9	128.2	150.1	50.0	200.1	22.3	5.5	6.1	5.9	6.1	4.9	2.7
2002												
January	26.5	147.2	173.6	48.2	221.8	25.7	6.3	7.1	5.9	6.8	5.9	3.1
February	21.6	146.3	167.9	50.5	218.4	22.3	6.2	6.9	5.9	6.6	4.8	3.1
March	21.6	128.1	149.8	59.9	209.7	24.7	5.5	6.2	6.9	6.4	4.8	2.7
April	23.8	124.6	148.3	48.4	196.7	28.4	5.4	6.2	5.4	6.0	5.3	2.6
May	19.3	128.9	148.2	48.2	196.3	21.7	5.5	6.1	5.6	6.0	4.3	2.7
VICTORIA												
2001												
March	12.3	93.9	106.2	55.6	161.7	20.3	5.4	5.9	8.2	6.6	3.7	2.7
April	13.1	96.2	109.3	46.6	155.9	21.2	5.5	6.1	6.9	6.3	4.0	2.7
May	12.1	96.2	108.2	49.2	157.4	20.3	5.6	6.1	7.2	6.4	3.7	2.7
June	13.1	93.6	106.8	39.7	146.4	21.3	5.5	6.0	5.6	5.9	4.0	2.6
July	11.2	97.6	108.8	38.7	147.5	19.3	5.7	6.1	5.6	6.0	3.4	2.8
August	12.6	100.6	113.2	38.8	152.0	22.3	5.9	6.4	5.6	6.2	3.8	2.8
September	11.9	100.6	112.4	45.9	158.3	20.7	5.7	6.2	6.7	6.3	3.6	2.8
October	14.2	105.2	119.3	45.4	164.7	23.0	6.0	6.6	6.6	6.6	4.3	3.0
November	15.7	95.2	110.9	36.4	147.3	24.9	5.5	6.2	5.4	6.0	4.7	2.7
December	20.3	97.6	117.9	43.3	161.2	26.1	5.5	6.4	6.5	6.4	6.1	2.7
2002												
January	15.8	109.3	125.1	45.2	170.2	22.2	6.3	6.9	6.8	6.8	4.8	3.1
February	15.3	112.7	128.0	45.9	173.9	23.6	6.4	7.1	6.7	7.0	4.6	3.1
March	14.3	102.1	116.5	39.7	156.2	23.5	5.9	6.5	5.6	6.2	4.3	2.8
April	11.7	92.0	103.7	40.1	143.8	20.5	5.3	5.8	5.7	5.8	3.5	2.6
May	12.3	88.6	100.9	41.3	142.2	22.0	5.1	5.7	5.8	5.7	3.7	2.5
QUEENSLAND												
2001												
March	22.9	102.8	125.7	40.5	166.2	32.2	8.0	9.3	8.1	9.0	8.6	4.0
April	21.6	106.7	128.3	40.1	168.4	30.1	8.4	9.6	7.7	9.0	8.2	4.1
May	20.3	111.9	132.2	34.4	166.6	30.7	8.8	9.8	6.6	8.9	7.6	4.3
June	20.2	102.4	122.6	32.0	154.6	29.8	8.1	9.2	6.1	8.3	7.6	4.0
July	14.8	94.6	109.4	31.0	140.4	22.3	7.5	8.3	5.8	7.6	5.6	3.6
August	14.3	100.3	114.6	31.1	145.7	22.9	8.0	8.7	5.9	7.9	5.4	3.9
September	15.2	100.2	115.4	34.3	149.7	22.9	7.8	8.5	6.6	8.0	5.7	3.8
October	18.1	93.7	111.7	31.5	143.3	26.6	7.3	8.3	6.0	7.7	6.8	3.6
November	14.9	93.4	108.3	31.1	139.4	23.5	7.3	8.1	6.0	7.5	5.6	3.6
December	22.5	94.8	117.3	35.4	152.7	29.5	7.3	8.6	6.7	8.0	8.5	3.6
2002												
January	20.0	108.0	128.0	32.0	160.0	27.9	8.4	9.4	6.4	8.6	7.5	4.1
February	25.0	106.3	131.3	36.4	167.7	31.5	8.2	9.5	7.0	8.8	9.4	4.1
March	16.3	97.8	114.1	37.7	151.8	22.7	7.6	8.4	7.1	8.0	6.1	3.7
April	12.5	95.6	108.1	37.6	145.7	18.3	7.5	8.0	7.1	7.8	4.7	3.6
May	14.7	89.5	104.2	38.2	142.4	22.6	7.0	7.8	7.0	7.6	5.5	3.4

UNEMPLOYED PERSONS—South Australia, Western Australia and Tasmania: **Original**

Month	NUMBER OF UNEMPLOYED PERSONS.....					UNEMPLOYMENT RATE.....					UNEMPLOYMENT TO POPULATION RATIO	
	Aged 15-19 looking for f/t work	Aged 20 and over looking for f/t work	Total looking for f/t work	Looking for p/t work	Total	Aged 15-19 looking for f/t work	Aged 20 and over looking for f/t work	Total looking for f/t work	Looking for p/t work	Total	Aged 15-19 looking for f/t work	Aged 20 and over looking for f/t work
	'000	'000	'000	'000	'000	%	%	%	%	%	%	%
SOUTH AUSTRALIA												
2001												
March	5.1	34.7	39.7	11.2	50.9	24.2	7.1	7.8	5.2	7.1	4.9	3.1
April	5.1	35.0	40.1	13.5	53.6	23.9	7.2	7.9	6.1	7.4	4.9	3.2
May	6.9	36.2	43.1	12.8	56.0	30.0	7.4	8.4	6.0	7.7	6.7	3.3
June	5.8	33.8	39.6	11.8	51.3	25.9	7.0	7.8	5.3	7.1	5.6	3.0
July	6.8	35.3	42.0	10.6	52.6	28.0	7.2	8.2	5.0	7.3	6.6	3.2
August	7.0	32.5	39.6	12.8	52.3	30.0	6.7	7.8	5.9	7.2	6.8	2.9
September	6.3	35.1	41.4	11.3	52.7	27.2	7.1	8.0	5.2	7.2	6.1	3.2
October	6.1	32.8	38.9	12.1	51.0	25.3	6.7	7.6	5.5	7.0	5.9	3.0
November	5.2	32.9	38.1	10.8	49.0	24.5	6.6	7.4	5.0	6.7	5.0	3.0
December	7.1	32.7	39.7	12.5	52.2	27.2	6.6	7.6	5.6	7.0	6.8	2.9
2002												
January	9.4	34.1	43.5	12.7	56.3	33.0	7.0	8.4	5.9	7.7	9.1	3.1
February	7.8	37.6	45.5	11.5	56.9	33.8	7.6	8.8	5.1	7.7	7.6	3.4
March	5.1	33.0	38.1	11.9	50.0	26.4	6.8	7.5	5.1	6.8	4.9	3.0
April	6.5	32.4	38.8	9.8	48.6	30.0	6.7	7.7	4.1	6.5	6.3	2.9
May	6.7	32.9	39.6	10.9	50.5	32.2	6.7	7.7	4.8	6.8	6.5	3.0
WESTERN AUSTRALIA												
2001												
March	8.4	47.6	56.0	19.5	75.5	24.6	6.9	7.8	6.7	7.5	6.0	3.5
April	7.6	42.9	50.5	19.2	69.7	20.9	6.4	7.1	6.4	6.9	5.4	3.1
May	8.0	45.3	53.3	18.0	71.2	21.5	6.7	7.5	6.2	7.1	5.6	3.3
June	9.9	48.7	58.6	19.4	78.1	24.9	7.2	8.2	6.5	7.7	7.0	3.6
July	7.9	45.2	53.1	13.2	66.3	19.6	6.7	7.4	4.6	6.6	5.6	3.3
August	4.9	45.6	50.6	14.3	64.9	14.0	6.7	7.1	4.9	6.5	3.5	3.3
September	9.1	44.7	53.8	17.2	71.0	23.4	6.6	7.5	5.9	7.0	6.4	3.3
October	8.1	37.9	46.0	17.7	63.7	21.9	5.7	6.5	5.9	6.3	5.7	2.8
November	8.4	38.2	46.6	13.7	60.3	23.4	5.6	6.5	4.7	6.0	5.9	2.8
December	8.0	39.7	47.7	13.5	61.2	19.5	5.8	6.6	4.6	6.0	5.6	2.9
2002												
January	9.4	52.2	61.6	17.7	79.3	23.0	7.6	8.4	6.3	7.8	6.6	3.8
February	7.9	48.0	55.9	18.0	73.9	23.0	6.9	7.7	6.0	7.2	5.6	3.5
March	6.6	39.6	46.1	15.3	61.5	20.6	5.9	6.6	5.0	6.1	4.6	2.9
April	6.6	42.6	49.2	15.0	64.2	19.4	6.2	6.9	5.0	6.3	4.6	3.1
May	7.7	40.7	48.3	15.7	64.1	22.4	6.0	6.7	5.4	6.4	5.4	2.9
TASMANIA												
2001												
March	1.9	12.6	14.4	4.0	18.4	23.4	8.6	9.3	6.2	8.4	5.4	3.7
April	1.9	13.1	15.0	4.0	19.1	23.2	9.0	9.7	6.1	8.6	5.6	3.9
May	1.6	11.5	13.1	3.6	16.7	19.7	8.0	8.7	5.4	7.7	4.6	3.4
June	2.5	12.1	14.6	3.0	17.6	26.2	8.6	9.8	4.6	8.2	7.4	3.6
July	2.8	13.2	15.9	3.1	19.0	28.5	9.4	10.6	4.7	8.8	8.0	3.9
August	3.6	14.8	18.4	3.6	22.0	39.0	10.4	12.1	5.7	10.2	10.6	4.4
September	3.5	13.2	16.6	4.7	21.4	36.1	8.8	10.5	7.6	9.7	10.2	3.9
October	2.5	12.1	14.7	4.0	18.7	30.3	8.5	9.7	6.1	8.6	7.4	3.6
November	2.9	13.1	16.0	2.7	18.7	31.1	9.0	10.3	4.2	8.5	8.5	3.9
December	2.3	13.4	15.7	3.0	18.7	22.6	9.1	10.0	4.7	8.5	6.8	3.9
2002												
January	3.2	13.9	17.1	3.8	20.9	31.1	9.5	11.0	6.2	9.6	9.4	4.1
February	2.4	13.5	15.9	3.8	19.7	27.1	9.3	10.3	6.0	9.0	7.0	4.0
March	2.2	11.9	14.1	3.6	17.7	22.5	8.3	9.2	5.8	8.2	6.3	3.5
April	1.7	12.0	13.8	2.8	16.6	19.9	8.6	9.3	4.3	7.7	5.1	3.5
May	1.8	12.3	14.1	3.4	17.4	20.1	8.8	9.5	5.0	8.1	5.2	3.6

UNEMPLOYED PERSONS—Northern Territory and Australian Capital Territory: **Original**

Month	NUMBER OF UNEMPLOYED PERSONS.....					UNEMPLOYMENT RATE.....					UNEMPLOYMENT TO POPULATION RATIO	
	Aged 15-19 looking for f/t work	Aged 20 and over looking for f/t work	Total looking for f/t work	Looking for p/t work	Total	Aged 15-19 looking for f/t work	Aged 20 and over looking for f/t work	Total looking for f/t work	Looking for p/t work	Total	Aged 15-19 looking for f/t work	Aged 20 and over looking for f/t work
	'000	'000	'000	'000	'000	%	%	%	%	%	%	%
NORTHERN TERRITORY												
2001												
March	* 0.5	3.3	3.8	* 0.8	4.5	* 15.5	4.4	4.9	* 3.7	4.6	* 3.5	2.6
April	* 0.8	3.9	4.7	1.4	6.2	* 22.4	5.1	6.0	6.3	6.0	* 5.7	3.1
May	* 0.6	3.8	4.4	2.7	7.1	* 17.0	5.1	5.6	12.5	7.1	* 3.8	3.0
June	* 0.8	3.5	4.3	3.4	7.6	* 22.2	4.7	5.5	11.6	7.1	* 5.2	2.7
July	* 0.6	3.1	3.7	3.7	7.4	* 15.3	4.2	4.7	13.5	7.0	* 3.9	2.5
August	* 0.6	3.3	4.0	3.8	7.8	* 20.4	4.6	5.2	13.2	7.4	* 4.2	2.6
September	* 0.7	3.8	4.4	2.1	6.5	* 22.2	4.8	5.5	7.8	6.0	* 4.5	2.9
October	1.0	4.1	5.1	2.7	7.8	29.3	5.5	6.5	9.8	7.4	6.8	3.2
November	* 0.9	4.5	5.5	3.1	8.6	* 28.2	6.1	7.0	11.1	8.1	* 6.4	3.5
December	1.0	4.1	5.0	3.1	8.2	25.8	5.5	6.5	10.7	7.6	6.6	3.2
2002												
January	1.4	4.8	6.2	3.7	9.9	34.4	6.5	8.0	13.6	9.4	9.6	3.8
February	* 0.8	3.8	4.6	2.3	6.9	* 28.3	5.3	6.2	7.9	6.7	* 5.6	3.0
March	1.1	4.1	5.2	1.8	7.0	32.0	5.6	6.7	6.2	6.6	7.4	3.2
April	* 0.6	4.8	5.5	1.1	6.6	* 18.6	6.5	7.0	3.9	6.2	* 4.2	3.8
May	* 0.6	2.9	3.5	1.2	4.7	* 24.4	3.8	4.5	4.1	4.4	* 4.3	2.2
AUSTRALIAN CAPITAL TERRITORY												
2001												
March	1.5	4.3	5.8	3.0	8.8	31.8	3.4	4.4	6.6	4.9	6.1	2.0
April	1.3	5.5	6.7	3.0	9.8	28.3	4.4	5.2	6.4	5.5	5.3	2.5
May	* 0.9	6.2	7.2	2.4	9.6	* 24.7	4.9	5.4	5.4	5.4	* 3.9	2.8
June	1.5	6.1	7.6	2.2	9.8	35.0	4.9	5.9	4.5	5.5	6.2	2.8
July	* 0.8	5.6	6.4	3.5	9.9	* 21.3	4.5	5.0	7.3	5.6	* 3.5	2.5
August	* 0.9	5.1	6.0	1.9	7.9	* 20.7	4.2	4.8	4.1	4.6	* 3.9	2.3
September	* 1.0	4.8	5.7	2.3	8.0	* 21.3	3.8	4.4	4.7	4.5	* 4.1	2.2
October	1.2	4.3	5.5	1.5	7.0	30.0	3.4	4.3	3.3	4.0	5.1	1.9
November	* 0.9	3.9	4.8	2.0	6.7	* 22.0	3.1	3.7	4.5	3.9	* 3.7	1.7
December	* 1.0	4.2	5.2	2.0	7.2	* 22.0	3.3	3.9	4.2	4.0	* 4.3	1.9
2002												
January	1.6	5.2	6.7	2.0	8.7	29.2	4.1	5.2	4.8	5.1	6.6	2.3
February	1.2	4.3	5.5	3.4	8.9	25.2	3.4	4.2	7.5	5.1	5.0	1.9
March	* 0.8	4.0	4.9	3.2	8.1	* 21.8	3.2	3.8	6.9	4.6	* 3.5	1.8
April	* 0.3	4.3	4.6	3.3	7.9	* 8.9	3.4	3.5	7.1	4.5	* 1.3	1.9
May	* 0.3	5.6	5.8	2.9	8.8	* 7.6	4.3	4.4	6.4	4.9	* 1.1	2.5

LABOUR FORCE STATUS (AGED 15 AND OVER)—New South Wales(a)

SEASONALLY ADJUSTED.....

TREND.....

Month	SEASONALLY ADJUSTED.....					TREND.....					Civilian population aged 15 and over '000
	Employed full time '000	Total employed '000	Total unemployed '000	Unemp- loyment rate %	Partic- ipation rate %	Employed full time '000	Total employed '000	Total unemployed '000	Unemp- loyment rate %	Partic- ipation rate %	
MALES											
2001											
March	1 488.4	1 705.0	104.6	5.8	70.8	1 485.0	1 705.3	110.3	6.1	71.1	2 555.1
April	1 486.0	1 711.8	109.8	6.0	71.2	1 484.2	1 708.4	110.7	6.1	71.1	2 557.6
May	1 486.6	1 714.2	112.3	6.1	71.3	1 483.6	1 712.1	110.8	6.1	71.2	2 560.1
June	1 484.2	1 713.2	114.9	6.3	71.3	1 482.8	1 715.6	111.4	6.1	71.3	2 562.7
July	1 470.8	1 717.3	113.9	6.2	71.4	1 481.9	1 718.1	112.3	6.1	71.3	2 565.6
August	1 485.8	1 724.6	103.0	5.6	71.2	1 481.5	1 719.1	113.3	6.2	71.3	2 568.4
September	1 487.7	1 718.8	116.4	6.3	71.4	1 482.5	1 719.4	113.8	6.2	71.3	2 571.3
October	1 483.9	1 718.8	120.0	6.5	71.4	1 485.0	1 719.9	114.1	6.2	71.2	2 574.3
November	1 479.9	1 719.0	118.1	6.4	71.3	1 488.0	1 720.9	114.5	6.2	71.2	2 577.3
December	1 492.5	1 721.2	108.2	5.9	70.9	1 490.7	1 722.7	115.0	6.3	71.2	2 580.3
2002											
January	1 496.6	1 721.2	113.5	6.2	71.0	1 492.7	1 725.2	115.7	6.3	71.3	2 582.7
February	1 503.4	1 738.0	117.2	6.3	71.8	1 494.3	1 728.1	116.6	6.3	71.4	2 585.0
March	1 489.3	1 727.9	120.9	6.5	71.5	1 495.5	1 730.8	117.9	6.4	71.4	2 587.4
April	1 486.6	1 730.0	120.4	6.5	71.4	1 496.6	1 733.0	119.3	6.4	71.5	2 590.7
May	1 505.1	1 737.2	119.6	6.4	71.6	1 497.5	1 734.9	120.6	6.5	71.6	2 593.9
FEMALES											
2001											
March	805.2	1 335.8	72.0	5.1	53.5	794.6	1 342.9	74.8	5.3	53.9	2 630.3
April	789.1	1 355.1	77.3	5.4	54.4	795.2	1 346.5	76.5	5.4	54.1	2 632.3
May	791.0	1 347.3	78.0	5.5	54.1	793.6	1 347.9	78.9	5.5	54.2	2 634.2
June	797.5	1 347.2	83.6	5.8	54.3	790.1	1 347.4	81.9	5.7	54.2	2 636.2
July	779.0	1 340.3	83.3	5.8	53.9	785.1	1 345.6	84.8	5.9	54.2	2 638.7
August	780.6	1 352.6	89.0	6.2	54.6	778.8	1 342.3	87.9	6.1	54.1	2 641.3
September	780.2	1 336.2	86.9	6.1	53.8	772.2	1 338.8	90.6	6.3	54.1	2 643.8
October	760.2	1 333.5	97.5	6.8	54.1	767.1	1 337.1	92.3	6.5	54.0	2 646.5
November	762.7	1 337.8	89.5	6.3	53.9	764.0	1 338.1	92.2	6.4	54.0	2 649.2
December	759.0	1 334.7	90.7	6.4	53.8	763.8	1 341.1	90.1	6.3	54.0	2 651.9
2002											
January	787.9	1 378.3	97.3	6.6	55.6	765.4	1 345.0	86.7	6.1	53.9	2 654.0
February	780.0	1 369.0	75.0	5.2	54.4	767.8	1 348.6	83.1	5.8	53.9	2 656.1
March	781.8	1 354.5	74.8	5.2	53.8	769.9	1 350.8	79.9	5.6	53.8	2 658.2
April	751.7	1 341.1	77.2	5.4	53.3	771.6	1 351.7	77.4	5.4	53.7	2 661.1
May	779.0	1 349.1	80.5	5.6	53.7	772.6	1 351.7	76.1	5.3	53.6	2 663.9
PERSONS											
2001											
March	2 293.7	3 040.8	176.6	5.5	62.0	2 279.6	3 048.2	185.1	5.7	62.3	5 185.4
April	2 275.1	3 066.9	187.1	5.7	62.7	2 279.4	3 054.8	187.2	5.8	62.5	5 189.9
May	2 277.6	3 061.5	190.3	5.9	62.6	2 277.2	3 060.0	189.7	5.8	62.6	5 194.4
June	2 281.6	3 060.4	198.5	6.1	62.7	2 272.9	3 063.0	193.3	5.9	62.6	5 198.9
July	2 249.8	3 057.6	197.2	6.1	62.5	2 266.9	3 063.7	197.2	6.0	62.7	5 204.3
August	2 266.5	3 077.2	192.0	5.9	62.8	2 260.3	3 061.4	201.1	6.2	62.6	5 209.7
September	2 267.8	3 055.0	203.3	6.2	62.5	2 254.7	3 058.2	204.5	6.3	62.6	5 215.1
October	2 244.1	3 052.2	217.4	6.7	62.6	2 252.1	3 057.0	206.4	6.3	62.5	5 220.8
November	2 242.6	3 056.8	207.6	6.4	62.5	2 252.1	3 059.1	206.7	6.3	62.5	5 226.5
December	2 251.5	3 055.9	198.9	6.1	62.2	2 254.5	3 063.8	205.1	6.3	62.5	5 232.2
2002											
January	2 284.4	3 099.4	210.8	6.4	63.2	2 258.1	3 070.2	202.5	6.2	62.5	5 236.7
February	2 283.4	3 107.0	192.2	5.8	62.9	2 262.1	3 076.7	199.7	6.1	62.5	5 241.1
March	2 271.1	3 082.4	195.7	6.0	62.5	2 265.5	3 081.6	197.8	6.0	62.5	5 245.6
April	2 238.3	3 071.1	197.6	6.0	62.2	2 268.2	3 084.8	196.7	6.0	62.5	5 251.7
May	2 284.1	3 086.3	200.1	6.1	62.5	2 270.0	3 086.6	196.7	6.0	62.5	5 257.8

(a) Trend estimates for November 2001 to April 2002 have been revised.

LABOUR FORCE STATUS (AGED 15 AND OVER)—Victoria(a)

SEASONALLY ADJUSTED.....

TREND.....

Month	SEASONALLY ADJUSTED.....					TREND.....					Civilian population aged 15 and over '000
	Employed full time '000	Total employed '000	Total unemployed '000	Unemp- loyment rate %	Partic- ipation rate %	Employed full time '000	Total employed '000	Total unemployed '000	Unemp- loyment rate %	Partic- ipation rate %	
MALES											
2001											
March	1 118.4	1 291.8	83.9	6.1	72.7	1 121.5	1 301.9	84.1	6.1	73.3	1 891.8
April	1 124.4	1 303.7	86.9	6.3	73.4	1 118.5	1 301.6	84.0	6.1	73.1	1 894.3
May	1 116.3	1 302.6	82.8	6.0	73.0	1 115.9	1 301.6	84.5	6.1	73.1	1 896.8
June	1 115.8	1 304.6	83.3	6.0	73.1	1 113.8	1 301.6	85.9	6.2	73.1	1 899.3
July	1 108.0	1 299.8	88.3	6.4	73.0	1 112.6	1 301.6	87.8	6.3	73.1	1 901.8
August	1 110.3	1 300.8	89.2	6.4	73.0	1 113.3	1 302.0	89.8	6.5	73.1	1 904.4
September	1 118.5	1 304.1	90.1	6.5	73.1	1 116.0	1 302.8	91.6	6.6	73.1	1 906.9
October	1 115.5	1 301.6	101.9	7.3	73.5	1 120.2	1 304.2	92.9	6.6	73.1	1 910.0
November	1 125.9	1 305.6	87.8	6.3	72.8	1 124.3	1 306.3	93.0	6.6	73.1	1 913.1
December	1 133.1	1 308.9	88.2	6.3	72.9	1 127.1	1 308.4	91.8	6.6	73.1	1 916.2
2002											
January	1 135.3	1 317.6	94.8	6.7	73.6	1 128.3	1 310.3	89.9	6.4	73.0	1 918.6
February	1 117.8	1 303.7	89.7	6.4	72.5	1 128.5	1 311.8	87.7	6.3	72.8	1 921.1
March	1 131.5	1 317.9	82.2	5.9	72.8	1 128.6	1 313.0	85.6	6.1	72.7	1 923.5
April	1 124.5	1 310.4	82.0	5.9	72.3	1 128.9	1 314.1	83.6	6.0	72.6	1 926.3
May	1 133.7	1 317.1	82.8	5.9	72.6	1 128.8	1 314.9	82.6	5.9	72.5	1 929.1
FEMALES											
2001											
March	569.7	1 016.8	66.7	6.2	55.1	568.2	1 013.3	67.4	6.2	54.9	1 967.4
April	569.8	1 011.1	66.7	6.2	54.7	566.2	1 013.7	69.3	6.4	55.0	1 969.3
May	568.8	1 014.5	75.7	6.9	55.3	563.7	1 013.4	69.8	6.4	54.9	1 971.3
June	559.3	1 011.6	69.6	6.4	54.8	561.7	1 013.1	69.3	6.4	54.9	1 973.3
July	546.5	1 007.5	67.9	6.3	54.4	561.1	1 013.6	68.3	6.3	54.8	1 975.4
August	561.8	1 021.0	67.1	6.2	55.0	562.1	1 014.5	67.8	6.3	54.7	1 977.5
September	573.8	1 015.1	61.0	5.7	54.4	563.7	1 015.2	68.1	6.3	54.7	1 979.7
October	566.5	1 016.4	72.0	6.6	54.9	564.4	1 015.9	69.3	6.4	54.7	1 982.3
November	566.1	1 019.3	71.0	6.5	54.9	563.6	1 016.8	70.6	6.5	54.8	1 984.8
December	557.3	1 014.1	74.5	6.8	54.8	561.4	1 018.5	71.0	6.5	54.8	1 987.4
2002											
January	559.1	1 036.1	71.5	6.5	55.7	558.5	1 021.5	69.9	6.4	54.9	1 989.4
February	549.7	1 027.4	67.9	6.2	55.0	556.7	1 025.5	67.6	6.2	54.9	1 991.5
March	558.5	1 033.2	63.0	5.7	55.0	555.9	1 030.0	64.8	5.9	54.9	1 993.5
April	560.4	1 032.8	59.6	5.5	54.7	555.6	1 034.1	62.0	5.7	54.9	1 996.1
May	553.7	1 040.7	60.1	5.5	55.1	555.5	1 037.7	59.8	5.5	54.9	1 998.7
PERSONS											
2001											
March	1 688.1	2 308.7	150.6	6.1	63.7	1 689.8	2 315.3	151.5	6.1	63.9	3 859.2
April	1 694.2	2 314.8	153.7	6.2	63.9	1 684.8	2 315.3	153.2	6.2	63.9	3 863.6
May	1 685.0	2 317.1	158.5	6.4	64.0	1 679.6	2 314.9	154.3	6.3	63.8	3 868.1
June	1 675.1	2 316.2	153.0	6.2	63.8	1 675.5	2 314.7	155.2	6.3	63.8	3 872.6
July	1 654.5	2 307.3	156.2	6.3	63.5	1 673.7	2 315.2	156.1	6.3	63.7	3 877.2
August	1 672.1	2 321.8	156.4	6.3	63.8	1 675.4	2 316.4	157.6	6.4	63.7	3 881.9
September	1 692.3	2 319.1	151.1	6.1	63.6	1 679.7	2 318.0	159.8	6.4	63.7	3 886.6
October	1 682.1	2 318.1	173.9	7.0	64.0	1 684.6	2 320.1	162.2	6.5	63.8	3 892.3
November	1 692.0	2 324.8	158.9	6.4	63.7	1 687.9	2 323.0	163.6	6.6	63.8	3 897.9
December	1 690.4	2 322.9	162.7	6.5	63.7	1 688.5	2 327.0	162.8	6.5	63.8	3 903.5
2002											
January	1 694.5	2 353.7	166.3	6.6	64.5	1 686.8	2 331.8	159.7	6.4	63.8	3 908.0
February	1 667.5	2 331.1	157.6	6.3	63.6	1 685.2	2 337.3	155.2	6.2	63.7	3 912.6
March	1 689.9	2 351.2	145.2	5.8	63.7	1 684.5	2 343.0	150.3	6.0	63.6	3 917.1
April	1 684.9	2 343.1	141.6	5.7	63.3	1 684.5	2 348.3	145.6	5.8	63.6	3 922.5
May	1 687.5	2 357.8	142.9	5.7	63.7	1 684.3	2 352.6	142.4	5.7	63.6	3 927.8

(a) Trend estimates for November 2001 to April 2002 have been revised.

LABOUR FORCE STATUS (AGED 15 AND OVER)—Queensland(a)

SEASONALLY ADJUSTED.....

TREND.....

Month	SEASONALLY ADJUSTED.....					TREND.....					Civilian population aged 15 and over '000
	Employed full time '000	Total employed '000	Total unemployed '000	Unemployment rate %	Participation rate %	Employed full time '000	Total employed '000	Total unemployed '000	Unemployment rate %	Participation rate %	
MALES											
2001											
March	813.5	938.8	89.4	8.7	73.1	810.1	935.7	89.9	8.8	72.9	1 406.6
April	810.2	935.9	92.8	9.0	73.0	807.5	936.1	91.8	8.9	73.0	1 408.5
May	809.8	941.3	95.5	9.2	73.5	805.5	937.7	92.2	9.0	73.0	1 410.5
June	795.4	934.3	92.0	9.0	72.7	804.8	940.3	91.2	8.8	73.0	1 412.4
July	804.7	942.1	86.1	8.4	72.7	805.4	943.5	89.4	8.7	73.0	1 414.5
August	805.7	951.4	87.7	8.4	73.3	807.1	946.5	87.6	8.5	73.0	1 416.6
September	814.5	949.3	86.9	8.4	73.0	809.6	949.5	86.5	8.3	73.0	1 418.8
October	815.9	954.3	83.8	8.1	73.1	812.5	952.5	86.3	8.3	73.1	1 420.8
November	811.9	952.7	86.0	8.3	73.0	815.1	955.3	86.8	8.3	73.2	1 422.8
December	816.3	958.5	88.2	8.4	73.5	817.3	958.2	87.1	8.3	73.4	1 424.8
2002											
January	817.5	956.8	89.9	8.6	73.4	819.4	961.4	86.5	8.3	73.4	1 426.8
February	824.8	970.0	85.6	8.1	73.9	821.8	965.1	85.1	8.1	73.5	1 428.8
March	824.8	969.1	82.9	7.9	73.5	824.5	968.6	83.2	7.9	73.5	1 430.8
April	825.3	970.3	79.5	7.6	73.2	826.9	971.7	81.1	7.7	73.5	1 433.3
May	830.9	975.5	76.8	7.3	73.3	829.1	974.3	79.0	7.5	73.4	1 435.8
FEMALES											
2001											
March	420.4	755.4	67.7	8.2	57.3	415.1	756.1	67.9	8.2	57.4	1 435.6
April	409.7	757.2	71.3	8.6	57.6	414.3	758.1	68.5	8.3	57.5	1 437.8
May	417.1	760.4	69.4	8.4	57.6	413.0	759.8	68.4	8.3	57.5	1 440.1
June	414.0	760.5	65.9	8.0	57.3	411.7	761.2	67.7	8.2	57.5	1 442.3
July	399.6	764.7	65.5	7.9	57.5	410.9	762.1	66.8	8.1	57.4	1 444.7
August	414.3	764.0	66.1	8.0	57.4	410.7	762.3	65.7	7.9	57.2	1 447.1
September	415.8	760.2	64.0	7.8	56.9	411.2	762.0	65.0	7.9	57.1	1 449.5
October	411.9	761.4	67.1	8.1	57.1	412.2	762.3	64.4	7.8	56.9	1 451.8
November	413.3	761.3	62.6	7.6	56.7	414.0	763.7	64.0	7.7	56.9	1 454.1
December	413.7	766.0	62.9	7.6	56.9	416.3	765.7	63.5	7.7	56.9	1 456.4
2002											
January	414.2	766.2	62.6	7.5	56.8	418.5	767.9	63.0	7.6	57.0	1 458.7
February	424.9	772.2	65.0	7.8	57.3	420.9	769.6	62.8	7.5	57.0	1 460.9
March	431.3	779.8	60.6	7.2	57.4	422.9	770.5	62.6	7.5	56.9	1 463.2
April	418.2	761.0	62.2	7.6	56.1	424.3	770.7	62.6	7.5	56.9	1 466.1
May	423.5	770.3	63.9	7.7	56.8	425.1	770.6	62.8	7.5	56.8	1 469.0
PERSONS											
2001											
March	1 233.9	1 694.2	157.0	8.5	65.1	1 225.1	1 691.8	157.7	8.5	65.1	2 842.2
April	1 219.9	1 693.1	164.1	8.8	65.2	1 221.8	1 694.2	160.2	8.6	65.2	2 846.4
May	1 226.9	1 701.7	165.0	8.8	65.5	1 218.6	1 697.5	160.6	8.6	65.2	2 850.6
June	1 209.4	1 694.8	157.9	8.5	64.9	1 216.5	1 701.5	159.0	8.5	65.2	2 854.7
July	1 204.3	1 706.9	151.7	8.2	65.0	1 216.3	1 705.6	156.2	8.4	65.1	2 859.3
August	1 220.0	1 715.4	153.8	8.2	65.3	1 217.8	1 708.8	153.3	8.2	65.0	2 863.8
September	1 230.3	1 709.4	150.9	8.1	64.9	1 220.8	1 711.5	151.4	8.1	65.0	2 868.3
October	1 227.8	1 715.8	150.9	8.1	65.0	1 224.8	1 714.8	150.8	8.1	64.9	2 872.6
November	1 225.2	1 714.0	148.5	8.0	64.7	1 229.1	1 718.9	150.8	8.1	65.0	2 876.9
December	1 230.1	1 724.5	151.1	8.1	65.1	1 233.5	1 723.9	150.6	8.0	65.1	2 881.2
2002											
January	1 231.7	1 723.1	152.5	8.1	65.0	1 237.9	1 729.3	149.6	8.0	65.1	2 885.5
February	1 249.6	1 742.2	150.6	8.0	65.5	1 242.7	1 734.7	147.9	7.9	65.1	2 889.8
March	1 256.0	1 748.9	143.5	7.6	65.4	1 247.3	1 739.0	145.8	7.7	65.1	2 894.0
April	1 243.5	1 731.2	141.7	7.6	64.6	1 251.2	1 742.4	143.7	7.6	65.1	2 899.4
May	1 254.4	1 745.7	140.7	7.5	64.9	1 254.2	1 744.9	141.8	7.5	65.0	2 904.8

(a) Trend estimates for November 2001 to April 2002 have been revised.

LABOUR FORCE STATUS (AGED 15 AND OVER)—South Australia(a)

SEASONALLY ADJUSTED.....

TREND.....

Month	SEASONALLY ADJUSTED.....					TREND.....					Civilian population aged 15 and over '000
	Employed full time '000	Total employed '000	Total unemployed '000	Unemp- loyment rate %	Partic- ipation rate %	Employed full time '000	Total employed '000	Total unemployed '000	Unemp- loyment rate %	Partic- ipation rate %	
MALES											
2001											
March	312.4	369.0	32.7	8.1	67.8	317.2	372.5	33.3	8.2	68.5	592.3
April	316.8	371.7	34.7	8.5	68.6	316.1	371.8	33.8	8.3	68.4	592.6
May	319.8	373.7	34.3	8.4	68.8	315.7	371.6	34.1	8.4	68.4	592.9
June	314.3	371.8	32.7	8.1	68.2	315.8	371.8	34.1	8.4	68.4	593.1
July	314.2	370.8	36.1	8.9	68.6	316.1	372.4	33.8	8.3	68.4	593.5
August	317.8	374.1	32.6	8.0	68.5	316.6	373.1	33.3	8.2	68.4	593.9
September	316.9	374.4	31.8	7.8	68.3	317.2	374.0	32.8	8.1	68.5	594.3
October	318.4	374.9	32.7	8.0	68.5	317.8	375.1	32.4	8.0	68.5	594.5
November	318.8	376.4	32.1	7.9	68.7	318.5	376.6	32.0	7.8	68.7	594.8
December	317.6	377.3	31.7	7.8	68.7	319.1	378.3	31.7	7.7	68.9	595.1
2002											
January	323.0	380.6	31.2	7.6	69.2	319.6	379.9	31.4	7.6	69.1	595.5
February	317.3	381.2	32.5	7.8	69.4	320.3	381.4	31.0	7.5	69.2	595.9
March	321.1	384.2	28.7	7.0	69.3	321.1	382.6	30.6	7.4	69.3	596.2
April	322.0	383.3	30.5	7.4	69.4	322.0	383.6	30.2	7.3	69.4	596.6
May	324.5	383.2	30.0	7.3	69.2	322.8	384.2	29.9	7.2	69.4	597.0
FEMALES											
2001											
March	156.6	301.5	17.0	5.3	51.6	155.9	301.6	18.9	5.9	51.9	617.4
April	154.4	302.6	19.7	6.1	52.2	155.8	302.8	19.2	6.0	52.1	617.6
May	155.8	304.1	20.0	6.2	52.5	155.5	303.4	19.8	6.1	52.3	617.9
June	156.1	305.1	20.9	6.4	52.7	155.2	303.4	20.4	6.3	52.4	618.2
July	156.4	302.5	20.7	6.4	52.3	155.1	303.3	20.6	6.4	52.4	618.6
August	151.8	302.7	20.8	6.4	52.3	155.3	303.2	20.6	6.4	52.3	619.0
September	156.3	301.6	20.7	6.4	52.0	155.5	303.4	20.3	6.3	52.3	619.4
October	154.0	303.5	20.0	6.2	52.2	155.6	303.8	20.1	6.2	52.3	619.6
November	159.3	307.9	18.4	5.6	52.6	155.1	304.2	20.1	6.2	52.3	619.9
December	154.7	303.8	20.4	6.3	52.3	154.2	304.8	20.1	6.2	52.4	620.1
2002											
January	151.8	304.9	21.1	6.5	52.5	152.9	305.5	20.1	6.2	52.5	620.5
February	151.0	305.7	20.6	6.3	52.6	151.7	306.5	20.0	6.1	52.6	620.9
March	148.3	305.0	19.8	6.1	52.3	150.8	307.7	19.8	6.1	52.7	621.3
April	150.4	311.8	18.8	5.7	53.2	150.4	309.1	19.5	5.9	52.9	621.7
May	153.3	312.1	18.9	5.7	53.2	150.2	310.3	19.2	5.8	53.0	622.1
PERSONS											
2001											
March	469.0	670.5	49.7	6.9	59.5	473.1	674.1	52.2	7.2	60.0	1 209.7
April	471.2	674.3	54.4	7.5	60.2	471.9	674.6	52.9	7.3	60.1	1 210.2
May	475.5	677.8	54.3	7.4	60.5	471.2	675.0	53.8	7.4	60.2	1 210.8
June	470.5	676.8	53.7	7.3	60.3	471.0	675.3	54.4	7.5	60.2	1 211.3
July	470.6	673.3	56.9	7.8	60.2	471.2	675.7	54.5	7.5	60.2	1 212.1
August	469.6	676.8	53.4	7.3	60.2	471.9	676.4	53.9	7.4	60.2	1 212.9
September	473.2	676.0	52.5	7.2	60.0	472.7	677.5	53.2	7.3	60.2	1 213.6
October	472.4	678.4	52.6	7.2	60.2	473.4	678.9	52.5	7.2	60.2	1 214.2
November	478.2	684.3	50.5	6.9	60.5	473.7	680.8	52.1	7.1	60.3	1 214.7
December	472.3	681.1	52.1	7.1	60.3	473.3	683.0	51.8	7.0	60.5	1 215.2
2002											
January	474.8	685.5	52.4	7.1	60.7	472.5	685.4	51.5	7.0	60.6	1 216.0
February	468.3	687.0	53.1	7.2	60.8	472.0	687.8	51.0	6.9	60.7	1 216.7
March	469.4	689.2	48.5	6.6	60.6	472.0	690.3	50.4	6.8	60.8	1 217.5
April	472.5	695.1	49.3	6.6	61.1	472.4	692.6	49.7	6.7	60.9	1 218.3
May	477.8	695.3	48.9	6.6	61.0	473.0	694.5	49.2	6.6	61.0	1 219.1

(a) Trend estimates for November 2001 to April 2002 have been revised.

LABOUR FORCE STATUS (AGED 15 AND OVER)—Western Australia(a)

SEASONALLY ADJUSTED.....

TREND.....

Month	SEASONALLY ADJUSTED.....					TREND.....					Civilian population aged 15 and over '000
	Employed full time '000	Total employed '000	Total unemployed '000	Unemp- loyment rate %	Partic- ipation rate %	Employed full time '000	Total employed '000	Total unemployed '000	Unemp- loyment rate %	Partic- ipation rate %	
MALES											
2001											
March	446.8	523.3	43.2	7.6	75.4	453.0	526.6	41.3	7.3	75.6	751.5
April	452.0	526.9	42.2	7.4	75.6	452.4	526.7	42.6	7.5	75.6	752.5
May	451.9	525.3	41.8	7.4	75.3	451.9	526.7	43.4	7.6	75.7	753.5
June	454.2	528.8	44.6	7.8	76.0	452.0	526.9	43.7	7.7	75.6	754.4
July	453.4	528.7	43.7	7.6	75.8	452.7	527.5	43.4	7.6	75.6	755.5
August	452.8	527.3	43.6	7.6	75.4	453.6	528.4	42.6	7.5	75.5	756.6
September	452.7	527.2	41.5	7.3	75.1	455.1	529.6	41.7	7.3	75.4	757.7
October	454.1	529.8	40.1	7.0	75.1	456.6	530.9	40.6	7.1	75.3	758.9
November	464.3	536.5	38.2	6.6	75.6	458.2	532.5	39.4	6.9	75.3	760.0
December	457.2	533.7	38.6	6.7	75.2	459.2	533.8	38.6	6.7	75.2	761.1
2002											
January	460.9	533.1	39.9	7.0	75.2	459.6	534.9	38.3	6.7	75.2	761.9
February	461.3	537.5	38.7	6.7	75.5	459.5	535.6	38.5	6.7	75.3	762.8
March	455.3	535.0	34.4	6.0	74.6	459.4	536.2	39.0	6.8	75.3	763.7
April	458.3	536.6	41.7	7.2	75.6	459.5	536.7	39.7	6.9	75.4	764.9
May	462.8	537.9	42.8	7.4	75.8	459.3	537.0	40.5	7.0	75.5	766.1
FEMALES											
2001											
March	220.3	413.6	25.9	5.9	58.4	217.6	413.7	27.1	6.2	58.6	752.2
April	214.0	415.4	27.2	6.1	58.8	215.2	412.7	28.7	6.5	58.6	753.2
May	213.4	410.8	31.2	7.1	58.6	213.0	411.5	29.9	6.8	58.5	754.2
June	207.8	408.2	35.7	8.0	58.8	211.1	410.6	30.5	6.9	58.4	755.2
July	207.3	408.1	29.2	6.7	57.8	210.0	410.5	30.2	6.8	58.3	756.3
August	212.3	413.3	25.8	5.9	58.0	209.2	410.6	29.2	6.6	58.1	757.3
September	212.1	411.5	28.3	6.4	58.0	208.5	410.7	28.3	6.4	57.9	758.4
October	206.0	411.4	28.8	6.6	58.0	207.5	410.8	27.6	6.3	57.7	759.5
November	206.7	412.7	26.0	5.9	57.7	206.2	411.2	27.3	6.2	57.7	760.5
December	203.7	409.4	25.6	5.9	57.1	205.3	411.9	27.0	6.2	57.6	761.6
2002											
January	203.6	407.4	30.6	7.0	57.5	205.4	412.9	26.4	6.0	57.6	762.5
February	207.4	417.7	25.6	5.8	58.1	206.6	414.2	25.4	5.8	57.6	763.4
March	205.6	420.0	21.8	4.9	57.8	208.3	415.3	24.3	5.5	57.5	764.2
April	213.7	416.0	22.4	5.1	57.3	210.2	416.0	23.4	5.3	57.4	765.5
May	213.2	412.7	23.5	5.4	56.9	211.9	416.4	22.7	5.2	57.3	766.9
PERSONS											
2001											
March	667.1	936.9	69.1	6.9	66.9	670.6	940.3	68.5	6.8	67.1	1 503.8
April	666.0	942.3	69.4	6.9	67.2	667.6	939.4	71.2	7.0	67.1	1 505.7
May	665.3	936.1	73.0	7.2	66.9	664.9	938.1	73.3	7.2	67.1	1 507.7
June	662.0	937.0	80.3	7.9	67.4	663.2	937.5	74.2	7.3	67.0	1 509.6
July	660.7	936.8	73.0	7.2	66.8	662.7	938.0	73.5	7.3	66.9	1 511.8
August	665.1	940.6	69.3	6.9	66.7	662.9	939.0	71.8	7.1	66.8	1 514.0
September	664.8	938.7	69.8	6.9	66.5	663.6	940.3	69.9	6.9	66.6	1 516.2
October	660.1	941.2	68.9	6.8	66.5	664.1	941.8	68.2	6.8	66.5	1 518.3
November	671.0	949.2	64.2	6.3	66.7	664.3	943.7	66.7	6.6	66.5	1 520.5
December	660.8	943.1	64.2	6.4	66.2	664.5	945.7	65.6	6.5	66.4	1 522.7
2002											
January	664.5	940.5	70.6	7.0	66.3	665.0	947.8	64.7	6.4	66.4	1 524.4
February	668.7	955.2	64.3	6.3	66.8	666.1	949.8	63.9	6.3	66.4	1 526.2
March	660.9	955.0	56.2	5.6	66.2	667.7	951.5	63.3	6.2	66.4	1 527.9
April	671.9	952.7	64.2	6.3	66.4	669.6	952.8	63.1	6.2	66.4	1 530.4
May	676.0	950.6	66.3	6.5	66.3	671.2	953.4	63.2	6.2	66.4	1 532.9

(a) Trend estimates for November 2001 to April 2002 have been revised.

LABOUR FORCE STATUS (AGED 15 AND OVER)—Tasmania(a)

SEASONALLY ADJUSTED.....

TREND.....

Month	SEASONALLY ADJUSTED.....					TREND.....					Civilian population aged 15 and over '000
	Employed full time '000	Total employed '000	Total unemployed '000	Unemployment rate %	Participation rate %	Employed full time '000	Total employed '000	Total unemployed '000	Unemployment rate %	Participation rate %	
MALES											
2001											
March	96.2	111.1	11.4	9.3	67.7	95.4	111.2	12.2	9.9	68.2	181.0
April	94.8	110.2	12.8	10.4	68.0	95.2	110.5	12.1	9.9	67.8	181.0
May	95.0	110.2	11.8	9.6	67.4	94.8	109.9	12.1	9.9	67.4	181.0
June	94.3	109.9	11.8	9.7	67.2	94.4	109.4	12.3	10.1	67.2	181.0
July	93.8	109.1	12.4	10.2	67.1	94.0	109.1	12.5	10.3	67.1	181.1
August	92.8	107.1	13.0	10.8	66.3	93.8	109.0	12.7	10.4	67.2	181.1
September	95.5	109.7	13.1	10.7	67.8	93.7	109.2	12.7	10.4	67.3	181.2
October	92.5	109.9	12.4	10.1	67.5	93.8	109.6	12.6	10.3	67.5	181.2
November	93.9	110.6	12.7	10.3	68.0	93.9	110.1	12.2	10.0	67.5	181.2
December	94.0	109.7	11.5	9.5	66.9	93.9	110.3	11.8	9.7	67.4	181.2
2002											
January	93.8	110.8	11.4	9.3	67.4	93.8	110.2	11.5	9.4	67.1	181.2
February	94.0	110.6	10.5	8.6	66.8	93.5	109.6	11.3	9.3	66.7	181.3
March	93.7	108.7	11.6	9.6	66.4	93.1	109.0	11.2	9.3	66.3	181.3
April	92.0	107.7	11.0	9.3	65.5	92.7	108.3	11.2	9.4	65.9	181.4
May	91.5	106.9	12.0	10.1	65.5	92.2	107.6	11.3	9.5	65.6	181.5
FEMALES											
2001											
March	43.0	89.2	6.7	7.0	50.1	43.1	89.7	6.6	6.8	50.4	191.2
April	43.2	89.7	6.8	7.1	50.5	42.7	89.3	6.6	6.9	50.2	191.2
May	42.3	89.5	5.9	6.2	49.9	42.7	89.0	6.8	7.1	50.1	191.3
June	42.3	88.5	6.9	7.3	49.8	42.9	88.9	7.1	7.4	50.2	191.4
July	42.7	88.4	8.3	8.5	50.5	43.5	89.1	7.3	7.5	50.3	191.5
August	43.8	89.0	7.5	7.8	50.4	44.2	89.3	7.3	7.6	50.4	191.6
September	47.1	89.9	7.6	7.7	50.8	44.8	89.5	7.3	7.5	50.5	191.7
October	45.0	90.1	6.5	6.7	50.4	45.2	89.6	7.2	7.5	50.5	191.7
November	44.9	90.3	6.6	6.8	50.5	45.2	89.4	7.2	7.5	50.4	191.8
December	44.6	88.8	7.0	7.3	50.0	44.8	89.0	7.3	7.5	50.2	191.8
2002											
January	44.5	87.6	8.2	8.5	49.9	44.2	88.7	7.3	7.6	50.0	191.9
February	43.0	88.3	8.4	8.6	50.3	43.7	88.6	7.1	7.5	49.9	192.0
March	44.4	88.9	5.9	6.2	49.4	43.1	88.7	6.9	7.2	49.8	192.1
April	41.6	88.7	6.1	6.4	49.3	42.7	88.9	6.6	6.9	49.7	192.2
May	42.2	90.2	6.3	6.5	50.2	42.3	89.2	6.3	6.6	49.7	192.3
PERSONS											
2001											
March	139.3	200.3	18.1	8.3	58.7	138.4	200.9	18.7	8.5	59.0	372.1
April	138.1	199.9	19.6	8.9	59.0	137.9	199.9	18.7	8.6	58.7	372.2
May	137.3	199.7	17.6	8.1	58.4	137.5	198.9	19.0	8.7	58.5	372.3
June	136.5	198.3	18.7	8.6	58.3	137.4	198.3	19.3	8.9	58.4	372.4
July	136.6	197.6	20.7	9.5	58.6	137.5	198.1	19.7	9.1	58.5	372.5
August	136.5	196.1	20.5	9.5	58.1	138.0	198.3	20.0	9.1	58.6	372.7
September	142.6	199.6	20.6	9.4	59.1	138.5	198.7	20.0	9.1	58.7	372.8
October	137.5	200.1	18.9	8.6	58.7	138.9	199.2	19.8	9.0	58.7	372.9
November	138.8	200.9	19.3	8.8	59.0	139.1	199.5	19.5	8.9	58.7	373.0
December	138.6	198.5	18.6	8.6	58.2	138.7	199.4	19.1	8.7	58.6	373.0
2002											
January	138.4	198.4	19.6	9.0	58.4	138.0	198.9	18.7	8.6	58.3	373.2
February	137.0	198.9	18.8	8.6	58.3	137.2	198.2	18.4	8.5	58.0	373.3
March	138.1	197.7	17.5	8.1	57.6	136.3	197.7	18.1	8.4	57.8	373.4
April	133.6	196.4	17.1	8.0	57.2	135.4	197.2	17.9	8.3	57.6	373.6
May	133.7	197.0	18.3	8.5	57.6	134.4	196.8	17.6	8.2	57.4	373.8

(a) Trend estimates for November 2001 to April 2002 have been revised.

LABOUR FORCE STATUS (AGED 15 AND OVER)—Northern Territory(a)

TREND.....

Month	Employed full time '000	Total employed '000	Total unemployed '000	Unemp- loyment rate %	Partic- ipation rate %	Civilian population aged 15 and over '000
MALES						
2001						
March	44.3	52.3	3.9	7.0	76.1	73.9
April	44.6	52.7	4.1	7.2	76.8	73.9
May	44.9	53.2	4.2	7.3	77.7	73.9
June	45.0	53.8	4.3	7.4	78.7	73.8
July	45.0	54.3	4.4	7.5	79.4	73.9
August	44.8	54.6	4.4	7.5	79.8	74.0
September	44.6	54.5	4.5	7.6	79.8	74.1
October	44.3	54.4	4.6	7.7	79.6	74.1
November	44.0	54.2	4.6	7.9	79.4	74.1
December	43.8	54.2	4.7	7.9	79.5	74.2
2002						
January	43.7	54.5	4.6	7.8	79.8	74.1
February	43.8	54.9	4.5	7.5	80.2	74.1
March	44.1	55.4	4.3	7.2	80.6	74.1
April	44.5	55.9	4.1	6.9	81.0	74.1
May	45.0	56.4	3.9	6.5	81.4	74.0
FEMALES						
2001						
March	29.6	42.0	1.9	4.4	64.8	67.9
April	29.9	42.7	2.2	4.9	66.1	68.0
May	30.0	43.3	2.5	5.5	67.3	68.0
June	29.8	43.4	2.9	6.3	68.0	68.1
July	29.4	43.3	3.3	7.0	68.2	68.2
August	28.8	42.9	3.6	7.7	68.0	68.3
September	28.4	42.6	3.8	8.1	67.8	68.4
October	28.1	42.5	3.8	8.3	67.7	68.5
November	28.0	42.8	3.8	8.1	68.0	68.5
December	28.1	43.3	3.6	7.7	68.3	68.6
2002						
January	28.3	43.9	3.3	6.9	68.7	68.6
February	28.5	44.4	2.8	6.0	68.8	68.7
March	28.6	44.8	2.4	5.1	68.7	68.7
April	28.7	45.1	2.0	4.2	68.5	68.7
May	28.7	45.2	1.6	3.5	68.2	68.7
PERSONS						
2001						
March	73.9	94.4	5.9	5.8	70.7	141.8
April	74.5	95.4	6.3	6.2	71.7	141.8
May	74.8	96.5	6.7	6.5	72.7	141.9
June	74.8	97.2	7.2	6.9	73.5	142.0
July	74.4	97.5	7.7	7.3	74.0	142.1
August	73.7	97.4	8.0	7.6	74.1	142.3
September	73.0	97.1	8.3	7.8	74.0	142.4
October	72.4	96.9	8.4	8.0	73.9	142.5
November	72.1	97.0	8.4	8.0	73.9	142.6
December	71.9	97.5	8.3	7.8	74.1	142.7
2002						
January	72.0	98.4	7.9	7.4	74.4	142.8
February	72.3	99.4	7.3	6.9	74.7	142.8
March	72.7	100.2	6.7	6.3	74.9	142.8
April	73.2	101.0	6.1	5.7	75.0	142.8
May	73.7	101.6	5.6	5.2	75.1	142.7

(a) Trend estimates for November 2001 to April 2002 have been revised. Estimates for the most recent three months may be subject to significant revisions as data for later months become available.

LABOUR FORCE STATUS (AGED 15 AND OVER)—Australian Capital Territory(a)

TREND.....

Month	Employed full time '000	Total employed '000	Total unemployed '000	Unemployment rate %	Participation rate %	Civilian population aged 15 and over '000
MALES						
2001						
March	74.8	87.8	5.3	5.7	78.2	119.0
April	74.4	87.5	5.6	6.0	78.2	119.1
May	73.9	87.3	6.0	6.4	78.2	119.2
June	73.3	87.1	6.1	6.6	78.2	119.3
July	72.9	87.1	6.1	6.5	78.0	119.5
August	72.8	87.2	5.8	6.2	77.7	119.6
September	72.8	87.5	5.4	5.8	77.5	119.7
October	72.9	87.8	5.0	5.4	77.4	119.9
November	73.1	88.0	4.8	5.1	77.3	120.1
December	73.2	88.0	4.7	5.1	77.1	120.2
2002						
January	73.5	87.9	4.7	5.1	76.9	120.4
February	73.9	87.8	4.7	5.1	76.8	120.5
March	74.3	87.7	4.7	5.1	76.6	120.6
April	74.7	87.7	4.8	5.1	76.5	120.8
May	75.1	87.7	4.8	5.2	76.5	120.9
FEMALES						
2001						
March	49.9	80.0	3.6	4.3	67.1	124.5
April	49.6	79.8	3.7	4.4	66.9	124.6
May	49.3	79.6	3.7	4.4	66.8	124.7
June	49.2	79.5	3.6	4.3	66.5	124.9
July	49.4	79.3	3.4	4.2	66.2	125.0
August	49.9	79.2	3.3	4.0	65.9	125.1
September	50.4	79.2	3.1	3.8	65.7	125.3
October	50.9	79.4	2.9	3.6	65.6	125.4
November	51.1	79.5	2.8	3.4	65.6	125.5
December	51.1	79.7	2.8	3.4	65.7	125.6
2002						
January	50.8	80.0	2.8	3.4	65.9	125.7
February	50.5	80.4	2.9	3.5	66.2	125.9
March	50.5	80.9	3.0	3.6	66.6	126.0
April	50.6	81.3	3.2	3.8	67.0	126.1
May	50.9	81.8	3.3	3.9	67.4	126.2
PERSONS						
2001						
March	124.8	167.8	8.8	5.0	72.5	243.5
April	124.0	167.2	9.3	5.3	72.4	243.7
May	123.2	166.9	9.7	5.5	72.4	243.9
June	122.6	166.6	9.7	5.5	72.2	244.2
July	122.4	166.4	9.5	5.4	72.0	244.5
August	122.6	166.4	9.0	5.1	71.7	244.7
September	123.2	166.7	8.4	4.8	71.5	245.0
October	123.9	167.2	7.9	4.5	71.4	245.3
November	124.2	167.5	7.6	4.3	71.3	245.6
December	124.3	167.8	7.5	4.3	71.3	245.9
2002						
January	124.3	167.9	7.5	4.3	71.3	246.1
February	124.4	168.2	7.7	4.4	71.4	246.4
March	124.8	168.6	7.8	4.4	71.5	246.6
April	125.3	169.0	7.9	4.5	71.7	246.9
May	126.0	169.4	8.1	4.6	71.9	247.1

(a) Trend estimates for November 2001 to April 2002 have been revised. Estimates for the most recent three months may be subject to significant revisions as data for later months become available.

EXPLANATORY NOTES

INTRODUCTION

1 This publication contains preliminary estimates of the civilian labour force derived from the Labour Force Survey component of the monthly population survey. Estimates for the current month are preliminary and subject to revision. Revised estimates for the current month and more detailed estimates will be published in *Labour Force, Australia* (Cat. no. 6203.0).

CONCEPTS, SOURCES AND METHODS

2 The conceptual framework used in Australia's Labour Force Survey aligns closely with the standards and guidelines set out in Resolutions of the International Conference of Labour Statisticians. Descriptions of the underlying concepts and structure of Australia's labour force statistics, and the sources and methods used in compiling the estimates, are presented in *Labour Statistics: Concepts, Sources and Methods* (Cat. no. 6102.0) which is also available on the ABS website www.abs.gov.au (Statistics—Statistical Concepts Library).

MONTHLY POPULATION SURVEY

3 The population survey is based on a multi-stage area sample of private dwellings (currently about 30,000 houses, flats, etc.) and a list sample of non-private dwellings (hotels, motels, etc.), and covers about 0.5% of the population of Australia. The information is obtained from the occupants of selected dwellings by specially trained interviewers. The information obtained relates to the week before the interview (i.e. the reference week).

4 Households selected for the Labour Force Survey are interviewed each month for 8 months, with one eighth of the sample being replaced each month. The first interview is conducted face-to-face. Subsequent interviews are conducted by telephone (if acceptable to the respondent).

5 The interviews are generally conducted during the two weeks beginning on the Monday between the 6th and 12th of each month. Each year, to deal with operational difficulties involved with collecting and processing the Labour Force Survey around the Christmas and New Year holiday period, interviews for December start four weeks after November interviews start, and January interviews start five weeks after December interviews start. Occasionally, circumstances that present significant operational difficulties for survey collection can result in a change to the normal pattern for the start of interviewing.

6 Estimates from the Labour Force Survey are published first in this publication 31 days after the commencement of interviews for that month, with the exception of estimates for each December which are published 38 days after the commencement of interviews.

SCOPE OF SURVEY

7 The Labour Force Survey includes all persons aged 15 and over except members of the permanent defence forces, certain diplomatic personnel of overseas governments customarily excluded from census and estimated population counts, overseas residents in Australia, and members of non-Australian defence forces (and their dependants) stationed in Australia.

COVERAGE

8 In the Labour Force Survey, coverage rules are applied which aim to ensure that each person is associated with only one dwelling, and hence has only one chance of selection. The coverage rules are necessarily a balance between theoretical and operational considerations. Nevertheless, the chance of a person being enumerated at two separate dwellings in the survey is considered to be negligible.

EXPLANATORY NOTES

POPULATION BENCHMARKS

9 Labour Force Survey estimates are calculated in such a way as to add up to independent estimates of the civilian population aged 15 and over (population benchmarks). From February 1999, labour force estimates have been compiled using benchmarks based on the results of the 1996 Census of Population and Housing. Small revisions were made to many of the historical estimates from January 1995 to January 1999.

COMPARABILITY OF SERIES

10 From April 1986, the definition of employed persons was changed to include persons who worked without pay between 1 and 14 hours per week in a family business or on a farm (i.e. contributing family workers). For further information, see paragraphs 36 and 37 of the Explanatory Notes to the February 1987 issue of *Labour Force, Australia* (Cat. no. 6203.0).

11 The ABS introduced telephone interviewing into the Labour Force Survey in August 1996. Implementation was phased in for each new sample group from August 1996 to February 1997. During the period of implementation, the new method produced different estimates than would have been obtained under the old methodology. The effect dissipated over the final months of implementation and was no longer discernible from February 1997. The estimates for February 1997 and onwards are directly comparable to estimates for periods prior to August 1996. For further details, see the feature article in the June 1997 issue of *Labour Force, Australia* (Cat. no. 6203.0).

12 From April 2001 the Labour Force Survey has been conducted using a redesigned questionnaire containing additional data items and some minor definitional changes. Core labour force series were revised for the period April 1986 to March 2001 to ensure continuity. For further details, see *Information Paper: Implementing the Redesigned Labour Force Survey Questionnaire* (Cat. no. 6295.0) and *Information Paper: Questionnaires Used in the Labour Force Survey* (Cat. no. 6232.0).

SURVEY SAMPLE REDESIGN

13 The Labour Force Survey sample was last reselected using information collected in the 1996 Census of Population and Housing.

14 The bulk of the new sample was phased in over the period September 1997 to April 1998, with one eighth of this portion of the sample being introduced every month. The remainder of the sample (about 15% of the total), which covers less settled areas of Australia and non-private dwellings was rotated in full for New South Wales, Victoria, Tasmania, Northern Territory and Australian Capital Territory in September 1997, and for Queensland, South Australia and Western Australia in October 1997. Such a pattern of implementation means that any changes to labour force estimates due to differences between the two samples, or any other influences, were spread over the eight months.

15 For further details, see *Information Paper: Labour Force Survey Sample Design* (Cat. no. 6269.0).

EXPLANATORY NOTES

RELIABILITY OF ESTIMATES

16 Two types of error are possible in an estimate based on a sample survey: sampling error and non-sampling error.

Sampling error occurs because a sample, rather than the entire population, is surveyed. One measure of the likely difference resulting from not including all dwellings in the survey is given by the standard error. There are about two chances in three that a sample estimate will differ by less than one standard error from the figure that would have been obtained if all dwellings had been included in the survey, and about nineteen chances in twenty that the difference will be less than two standard errors. Standard errors of estimates for the latest month and of estimates of movements since the previous month are shown on pages 31 and 32. Standard errors of other estimates and other movements may be determined by using information in the Technical Notes in *Labour Force, Australia* (Cat. no. 6203.0).

Non sampling error arises from inaccuracies in collecting, recording and processing the data. Every effort is made to minimise reporting error by the careful design of questionnaires, intensive training and supervision of interviewers, and efficient data processing procedures.

SEASONAL ADJUSTMENT AND TREND ESTIMATION

17 Seasonally adjusted series are published in Tables 2, 5 and 12 to 17. Seasonal factors are reviewed annually to take account of each additional year's original data. The results of the latest review were used to compile the seasonally adjusted and trend estimates given in this publication. Information about the last annual review of seasonal factors was published in a feature article in the February 2002 issue of *Labour Force, Australia* (Cat no. 6203.0).

18 Seasonal adjustment is a means of removing the estimated effects of normal seasonal variation from the series so that the effects of other influences on the series can be more clearly recognised. Seasonal adjustment does not aim to remove the irregular or non-seasonal influences which may be present in any particular month. This means that month-to-month movements of the seasonally adjusted estimates may not be reliable indicators of trend behaviour. For example, irregular factors unrelated to the trend account for more than half the seasonally adjusted movement with the following frequency:

Employment: 6 in 10 monthly movements

Unemployment: 8 in 10 monthly movements

Unemployment rate: 8 in 10 monthly movements

Participation rate: 9 in 10 monthly movements.

19 The smoothing of seasonally adjusted series reduces the impact of the irregular component of the seasonally adjusted series, and creates trend estimates. These trend estimates are derived by applying a 13-term Henderson-weighted moving average to all months except the last six. The last six monthly trend estimates are obtained by applying surrogates of the Henderson average to the seasonally adjusted series. Trend series are used to analyse the underlying behaviour of the series over time. These are published in tables 3, 6 and 12 to 19.

20 While this smoothing technique enables estimates to be produced for the latest month, it does result in revisions to the most recent months as additional observations become available. Generally, subsequent revisions become smaller, and after three months have a negligible impact on the series. There will also be revisions as a result of the annual review of seasonal factors.

EXPLANATORY NOTES

SEASONAL ADJUSTMENT AND TREND ESTIMATION *continued*

21 Trend estimates are published for the Northern Territory in table 18 and for the Australian Capital Territory in table 19. Unadjusted series for the two Territories have shown, historically, a high degree of variability, which can lead to considerable revisions to the seasonally adjusted estimates after each annual seasonal factor re-analysis. Seasonally adjusted estimates are not currently published for the two Territories. The most recent six months trend estimates are subject to revision. For the three most recent months, the revision may be relatively large. Inferences about trends drawn from smoothed seasonally adjusted (trend) estimates for months earlier than the latest three months are unlikely to be affected by month to month revisions. They may be affected by revision resulting from the annual re-analysis of seasonal factors.

22 For further information, see *A Guide to Interpreting Time Series—Monitoring 'Trends': an Overview* (Cat. no. 1348.0) or contact the Assistant Director, Time Series Analysis on (02) 6252 6345.

RELATED PUBLICATIONS

23 Users may also wish to refer to *Labour Force, Australia* (Cat. no. 6203.0). This publication contains a detailed list of related publications which are available from ABS Bookshops.

24 Current publications produced by the ABS are listed in the *Catalogue of Publications and Products* (Cat. no. 1101.0). The ABS also issues, on Tuesdays and Fridays, a *Release Advice* (Cat. no. 1105.0) which lists publications to be released in the next few days. The Catalogue and Release Advice are available from any ABS office.

DATA AVAILABLE ON REQUEST

25 As well as the statistics included in this and related publications, the ABS may have other relevant data available. Inquiries should be made to Narrisa Gilbert on 02 6252 5283 or to any ABS office.

EFFECTS OF ROUNDING

26 Estimates have been rounded and discrepancies may occur between sums of the component items and totals.

27 Estimates of movement shown in this publication are obtained by taking the difference of unrounded estimates. The movement estimate is then rounded to one decimal place. Therefore where a discrepancy occurs between the reported movement and the difference of the rounded estimates, the reported movement will be more accurate.

SYMBOLS AND OTHER USAGES

* subject to sampling variability too high for most practical uses. See the Technical Notes in Cat. no. 6203.0 for more details.

.. not applicable

r revised

pts percentage points

GLOSSARY

Actively looking for work	Includes writing, telephoning or applying in person to an employer for work; answering an advertisement for a job; checking factory noticeboards or the touchscreens at the Centrelink offices; being registered with Centrelink as a jobseeker; checking or registering with any other employment agency; advertising or tendering for work; and contacting friends or relatives.
Attending school	Persons aged 15 to 19 years enrolled at secondary or high school in the reference week.
Attending tertiary educational institution full time	Persons aged 15 to 24 years enrolled full time at a TAFE college, university, or other educational institution in the reference week, except those persons aged 15 to 19 years who were still attending school.
Civilian population aged 15 years and over	All usual residents of Australia aged 15 years and over except members of the permanent defence forces, certain diplomatic personnel of overseas governments customarily excluded from census and estimated population counts, overseas residents in Australia, and members of non-Australian defence forces (and their dependants) stationed in Australia.
Employed	All persons aged 15 years and over who, during the reference week: <ul style="list-style-type: none">■ worked for one hour or more for pay, profit, commission or payment in kind in a job or business, or on a farm (comprising employees, employers and own account workers); or■ worked for one hour or more without pay in a family business or on a farm (i.e. contributing family workers); or■ were employees who had a job but were not at work and were:<ul style="list-style-type: none">■ away from work for less than four weeks up to the end of the reference week; or■ away from work for more than four weeks up to the end of the reference week and received pay for some or all of the four week period to the end of the reference week; or■ away from work as a standard work or shift arrangement; or■ on strike or locked out; or■ on workers' compensation and expected to return to their job; or■ were employers or own account workers, who had a job, business or farm, but were not at work.
Full-time workers	Employed persons who usually worked 35 hours or more a week (in all jobs) and those who, although usually working less than 35 hours a week, worked 35 hours or more during the reference week.
Labour force	For any group, persons who were employed or unemployed, as defined.
Labour force status	A classification of the civilian population aged 15 years and over into employed, unemployed or not in the labour force, as defined. The definitions conform closely to the international standard definitions adopted by the International Conferences of Labour Statisticians.
Not in the labour force	Persons who were not in the categories employed or unemployed as defined.
Participation rate	For any group, the labour force expressed as a percentage of the civilian population aged 15 years and over in the same group.
Part-time workers	Employed persons who usually worked less than 35 hours a week (in all jobs) and either did so during the reference week, or were not at work in the reference week.

G L O S S A R Y

Seasonally adjusted series	A time series of estimates with the estimated effects of normal seasonal variation removed. See Explanatory Notes 17 and 18 for more detail.
Trend series	A smoothed seasonally adjusted series of estimates. See Explanatory Notes 19 to 21 for more detail.
Unemployed	Persons aged 15 years and over who were not employed during the reference week, and: <ul style="list-style-type: none">■ had actively looked for full-time or part-time work at any time in the four weeks up to the end of the reference week and:<ul style="list-style-type: none">■ were available for work in the reference week; or■ were waiting to start a new job within four weeks from the end of the reference week and could have started in the reference week if the job had been available then.
Unemployed looking for full-time work	Unemployed persons who: <ul style="list-style-type: none">■ actively looked for full-time work and were available for work in the reference week; or■ actively looked for work and were not available for work in the reference week because they were waiting to start a new full-time job.
Unemployed looking for part-time work	Unemployed persons who: <ul style="list-style-type: none">■ actively looked for part-time work only and were available for work in the reference week; or■ actively looked for work and were not available for work in the reference week because they were waiting to start a new part-time job.
Unemployment rate	For any group, the number of unemployed persons expressed as a percentage of the labour force in the same group.
Unemployment to population ratio	For any group, the number of unemployed persons expressed as a percentage of the civilian population in the same group.

STANDARD ERRORS

The estimates in this publication are based on information gained from the occupants of a sample survey of dwellings. Because the entire population is not surveyed, the published estimates are subject to sampling error. The most common way of quantifying such sampling error is to calculate the standard error for the published estimate or statistic.

LEVEL ESTIMATES

To illustrate, let us say the published level estimate for employed persons aged 15 to 19 is 500,000. The calculated standard error in this case is 8,700. The standard error is then used to interpret the level estimate of 500,000. For instance, the standard error of 8,700 indicates that:

- There are approximately two chances in three that the real value falls within the range 491,300 to 508,700 (500,000 + or - 8,700)
- There are approximately nineteen chances in twenty that the real value falls within the range 482,600 to 517,400 (500,000 + or - 17,400).

The real value in this case is the result we would obtain if we could enumerate the total population.

The following tables show the standard errors for this month's level estimates.

	EMPLOYED.....			UNEMPLOYED.....			Labour force	Not in labour force	Unemployment rate	Participation rate
	Full time	Part time	Total	Looking for f/t work	Looking for p/t work	Total				
	'000	'000	'000	'000	'000	'000				
NSW	18.5	10.5	22.3	5.2	3.7	5.7	23.2	17.0	0.2	0.4
Vic.	14.0	8.7	16.9	3.9	2.9	4.5	17.5	12.8	0.2	0.4
Qld	10.9	7.7	12.4	4.1	2.7	4.6	12.8	10.1	0.2	0.4
SA	5.0	3.7	5.8	1.9	1.1	2.1	6.0	5.0	0.3	0.5
WA	5.4	4.1	6.1	2.2	1.4	2.4	6.2	5.0	0.2	0.4
Tas.	1.8	1.4	2.1	0.8	0.4	0.8	2.2	1.9	0.4	0.6
NT	1.3	0.9	1.4	0.4	0.3	0.5	1.4	1.0	0.4	1.0
ACT	1.8	1.1	2.1	0.5	0.4	0.6	2.1	1.4	0.3	0.9
Males	21.4	10.1	23.6	7.1	4.1	7.7	24.7	15.4	0.1	0.3
Females	15.7	14.6	20.5	5.7	4.7	6.8	21.2	19.1	0.2	0.3
Persons	28.2	16.8	37.6	8.4	5.7	9.5	40.0	25.1	0.1	0.3

	NUMBER OF UNEMPLOYED PERSONS.....					UNEMPLOYMENT RATE.....				
	Aged 15-19 looking for f/t work	Aged 20 and over looking for f/t work	Total looking for f/t work	Looking for p/t work	Total	Aged 15-19 looking for f/t work	Aged 20 and over looking for f/t work	Total looking for f/t work	Looking for p/t work	Total
	'000	'000	'000	'000	'000	pts	pts	pts	pts	pts
NSW	2.6	5.0	5.2	3.7	5.7	2.9	0.2	0.2	0.4	0.2
Vic.	1.8	3.8	3.9	2.9	4.5	3.2	0.2	0.2	0.4	0.2
Qld	1.8	3.8	4.1	2.7	4.6	2.7	0.3	0.3	0.5	0.2
SA	0.9	1.7	1.9	1.1	2.1	4.4	0.4	0.4	0.5	0.3
WA	1.1	2.0	2.2	1.4	2.4	3.1	0.3	0.3	0.5	0.2
Tas.	0.3	0.7	0.8	0.4	0.8	3.9	0.5	0.5	0.6	0.4
NT	0.2	0.4	0.4	0.3	0.5	8.1	0.5	0.5	0.9	0.4
ACT	0.2	0.5	0.5	0.4	0.6	4.9	0.4	0.4	0.9	0.3
Males	3.1	6.8	7.1	4.1	7.7	1.8	0.1	0.2	0.5	0.1
Females	2.9	5.3	5.7	4.7	6.8	2.8	0.2	0.2	0.2	0.2
Persons	4.0	8.0	8.4	5.7	9.5	1.4	0.1	0.1	0.2	0.1

STANDARD ERRORS *continued*

MOVEMENT ESTIMATES

The following example illustrates how to use the standard error to interpret a movement estimate. Let us say that one month the published level estimate for females employed part time in Australia is 1,390,000; the next month the published level estimate is 1,400,000. The calculated standard error for the movement estimate is 13,000. The standard error is then used to interpret the published movement estimate of 10,000. For instance, the standard error of 13,000 indicates that:

- There are approximately two chances in three that the real movement over the two month period falls within the range -3,000 to 23,000 (10,000 + or - 13,000)
- There are approximately nineteen chances in twenty that the real movement falls within the range -16,000 to 36,000 (10,000 + or - 26,000).

The following tables show the standard errors for this month's movement estimates.

	EMPLOYED.....			UNEMPLOYED.....			Labour force	Not in labour force	Unemployment rate	Participation rate
	Full time	Part time	Total	Looking for f/t work	Looking for p/t work	Total				
	'000	'000	'000	'000	'000	'000				
NSW	9.9	7.1	11.0	3.9	2.7	4.3	11.2	9.5	0.1	0.2
Vic.	7.6	5.5	8.5	2.9	2.1	3.3	8.7	7.2	0.1	0.2
Qld	6.7	4.9	7.6	2.9	2.0	3.2	7.8	6.3	0.2	0.3
SA	3.1	2.4	3.6	1.3	0.8	1.4	3.6	3.1	0.2	0.3
WA	3.9	2.9	4.3	1.6	1.1	1.8	4.4	3.6	0.2	0.3
Tas.	1.2	0.9	1.4	0.6	0.3	0.6	1.4	1.3	0.3	0.4
NT	1.1	0.7	1.2	0.4	0.2	0.4	1.2	0.8	0.4	0.9
ACT	1.0	0.7	1.1	0.4	0.3	0.4	1.2	0.8	0.2	0.5
Males	14.1	7.5	14.9	5.4	3.2	5.8	15.2	10.8	0.1	0.2
Females	11.0	10.4	13.6	4.4	3.6	5.1	14.0	13.0	0.1	0.2
Persons	16.2	11.7	18.3	6.3	4.3	7.0	18.7	15.4	0.1	0.1

	NUMBER OF UNEMPLOYED PERSONS.....					UNEMPLOYMENT RATE.....				
	Aged 15-19 looking for f/t work	Aged 20 and over looking for f/t work	Total looking for f/t work	Looking for p/t work	Total	Aged 15-19 looking for f/t work	Aged 20 and over looking for f/t work	Total looking for f/t work	Looking for p/t work	Total
	'000	'000	'000	'000	'000	pts	pts	pts	pts	pts
NSW	2.1	3.8	3.9	2.7	4.3	2.5	0.2	0.2	0.3	0.1
Vic.	1.4	2.8	2.9	2.1	3.3	2.5	0.2	0.2	0.3	0.1
Qld	1.4	2.8	2.9	2.0	3.2	2.2	0.2	0.2	0.4	0.2
SA	0.7	1.2	1.3	0.8	1.4	3.4	0.2	0.3	0.4	0.2
WA	0.9	1.6	1.6	1.1	1.8	2.6	0.2	0.2	0.4	0.2
Tas.	0.3	0.5	0.6	0.3	0.6	3.1	0.4	0.4	0.5	0.3
NT	0.2	0.4	0.4	0.2	0.4	6.8	0.5	0.5	0.8	0.4
ACT	0.1	0.4	0.4	0.3	0.4	4.1	0.3	0.3	0.7	0.2
Males	2.6	5.2	5.4	3.2	5.8	1.4	0.1	0.1	0.4	0.1
Females	2.3	4.2	4.4	3.6	5.1	2.3	0.2	0.2	0.2	0.1
Persons	3.1	6.0	6.3	4.3	7.0	1.1	0.1	0.1	0.2	0.1

WHAT IF...? REVISIONS TO TREND ESTIMATES

EFFECT OF NEW SEASONALLY ADJUSTED ESTIMATES ON TREND ESTIMATES

Each time new seasonally adjusted estimates become available, trend estimates are revised (see paragraphs 19 and 20 of Explanatory Notes).

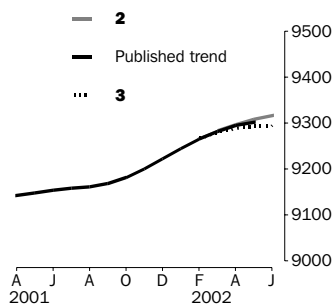
TREND REVISIONS

The examples in the tables below show four illustrative scenarios and the consequent revisions to previous trend estimates of employment and unemployment rate.

- 1** The June seasonally adjusted estimate is the same as the May estimate.
- 2** The June seasonally adjusted estimate is higher than the May estimate by:
 - +0.30% for employment
 - +1.84% for the unemployment rate
- 3** The June seasonally adjusted estimate is lower than the May estimate by:
 - -0.30% for employment
 - -1.84% for the unemployment rate
- 4** The June seasonally adjusted estimate results in a revised May trend estimate which is identical to the new June trend estimate.

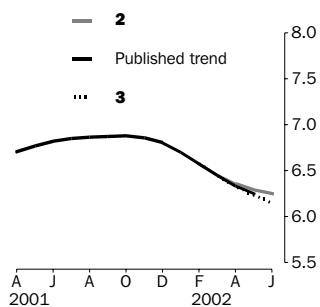
The percentage changes of 0.30% and 1.84% were chosen because they represent the average absolute monthly percentage changes in employment and the unemployment rate respectively.

EMPLOYMENT ('000)



		WHAT IF NEXT MONTH'S SEASONALLY ADJUSTED ESTIMATE IS:			
		1	2	3	4
		9 305.2 <i>i.e. the same as May 2002</i>	9 332.7 <i>i.e. rises by 0.30%</i>	9 277.6 <i>i.e. falls by 0.30%</i>	9 267.5 <i>i.e. same trend for May & Jun</i>
TRENDS AS PUBLISHED					
2002	March	9 282.3	9 281.6	9 282.8	9 280.4
	April	9 294.3	9 292.6	9 296.7	9 288.6
	May	9 302.7	9 300.9	9 308.5	9 293.2
	June (new)	—	9 306.2	9 317.8	9 294.6

UNEMPLOYMENT RATE (%)



		WHAT IF NEXT MONTH'S SEASONALLY ADJUSTED ESTIMATE IS:			
		1	2	3	4
		6.3 <i>i.e. the same as May 2002</i>	6.4 <i>i.e. rises by 1.84%</i>	6.2 <i>i.e. falls by 1.84%</i>	6.7 <i>i.e. same trend for May & Jun</i>
TRENDS AS PUBLISHED					
2002	March	6.4	6.5	6.5	6.4
	April	6.3	6.3	6.4	6.3
	May	6.2	6.3	6.3	6.2
	June (new)	—	6.2	6.2	6.4

FOR MORE INFORMATION...

- INTERNET* **www.abs.gov.au** the ABS web site is the best place to start for access to summary data from our latest publications, information about the ABS, advice about upcoming releases, our catalogue, and Australia Now—a statistical profile.
- LIBRARY* A range of ABS publications is available from public and tertiary libraries Australia-wide. Contact your nearest library to determine whether it has the ABS statistics you require, or visit our web site for a list of libraries.
- CPI INFOLINE* For current and historical Consumer Price Index data, call 1902 981 074 (call cost 77c per minute).
- DIAL-A-STATISTIC* For the latest figures for National Accounts, Balance of Payments, Labour Force, Average Weekly Earnings, Estimated Resident Population and the Consumer Price Index call 1900 986 400 (call cost 77c per minute).

INFORMATION SERVICE

Data which have been published and can be provided within five minutes are free of charge. Our information consultants can also help you to access the full range of ABS information—ABS user-pays services can be tailored to your needs, time frame and budget. Publications may be purchased. Specialists are on hand to help you with analytical or methodological advice.

- PHONE* **1300 135 070**
- EMAIL* **client.services@abs.gov.au**
- FAX* 1300 135 211
- POST* Client Services, ABS, GPO Box 796, Sydney 1041

WHY NOT SUBSCRIBE?

ABS subscription services provide regular, convenient and prompt deliveries of ABS publications and products as they are released. Email delivery of monthly and quarterly publications is available.

- PHONE* 1300 366 323
- EMAIL* subscriptions@abs.gov.au
- FAX* 03 9615 7848
- POST* Subscription Services, ABS, GPO Box 2796Y, Melbourne 3001



2620200005025
ISSN 1031-038X

RRP \$21.00